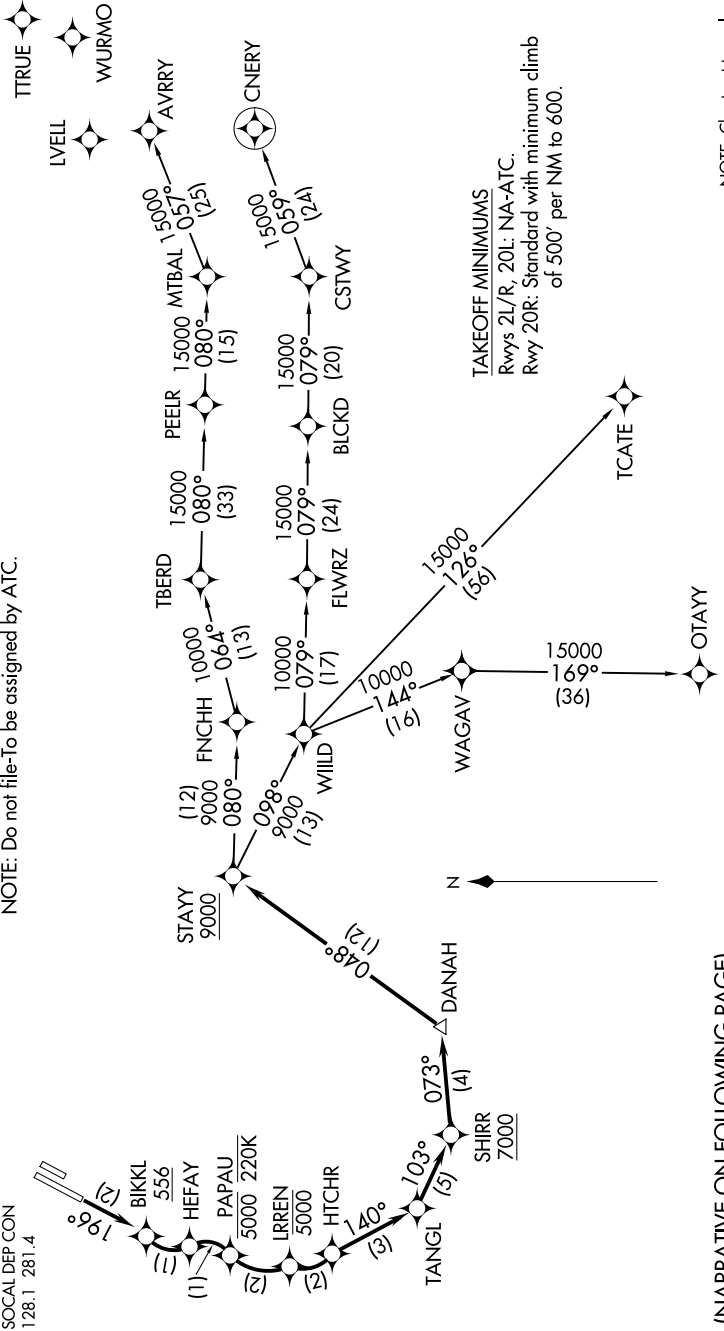


SW-3, 15 MAY 2025 to 12 JUN 2025

D-ATIS 126.0  
CLNC DEL 118.0  
CPDLC 120.8  
GND CON 126.8 343.625  
JOHN WAYNE TOWER\* 128.1 281.4  
SOCAL DEP CON

NOTE: RNP 1.  
NOTE: RF required.  
NOTE: GPS required.  
NOTE: RADAR required.  
NOTE: Turbojet only.  
NOTE: Parachute jumping all hours, 14000 and below, north of route between STAYY and FNCHH.  
NOTE: Do not file-To be assigned by ATC.

TOP ALTITUDE:  
13000



TAKEOFF MINIMUMS  
Rwys 2L/R, 20L: NA-ATC.  
Rwy 20R: Standard with minimum climb of 500' per NM to 600.

NOTE: Chart not to scale.

(NARRATIVE ON FOLLOWING PAGE)

SW-3, 15 MAY 2025 to 12 JUN 2025