

APP CRS	Rwy Idg	5700
016°	TDZE	56
	Apt Elev	56

RNAV (RNP) Z RWY 2L

JOHN WAYNE/ORANGE COUNTY (SNA)

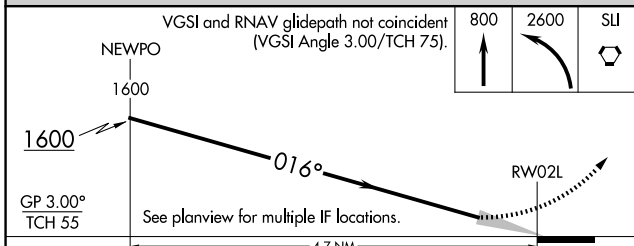
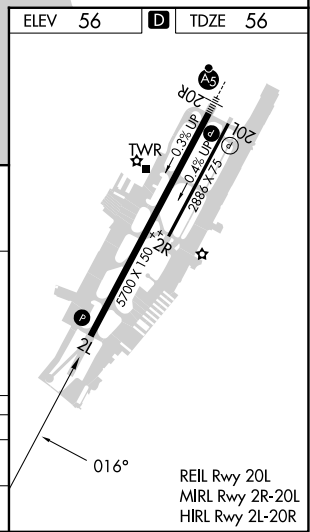
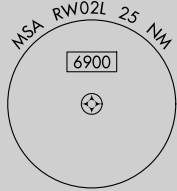
RNP AR APCH - GPS. Authorization required. From OSOYI: RF.		MISSED APPROACH: Climb to 800 then climbing left turn to 2600 direct SLI VORTAC and hold.			
▼ For uncompensated Baro-VNAV systems, procedure NA below 5°C or above 54°C.					

D-ATIS 126.0	SOCAL APP CON 121.3 263.1	JOHN WAYNE TOWER ★ 126.8 (CTAF) 0 343.625	GND CON 120.8	CLNC DEL 118.0	CPDLC	UNICOM 122.95
------------------------	-------------------------------------	--	-------------------------	--------------------------	-------	-------------------------



SW-3, 15 MAY 2025 to 12 JUN 2025

SW-3, 15 MAY 2025 to 12 JUN 2025



CATEGORY	A	B	C	D
RNP 0.30 DA		403-1 1/8	347 (400-1 1/8)	

AUTHORIZATION REQUIRED