

PIGGN THREE DEPARTURE (RNAV)

SW-3, 15 MAY 2025 to 12 JUN 2025

NOTE: RADAR required.

NOTE: RNAV-1.

NOTE: DME/DME/IRU or GPS required.

NOTE: Turboprop and turboprop only.

NOTE: Parachute jumping all hours, 14000' and below,

north of route between PIGGN and FNCHH.

NOTE: Aircraft may be RADAR vectored to DANAH or PIGGN.

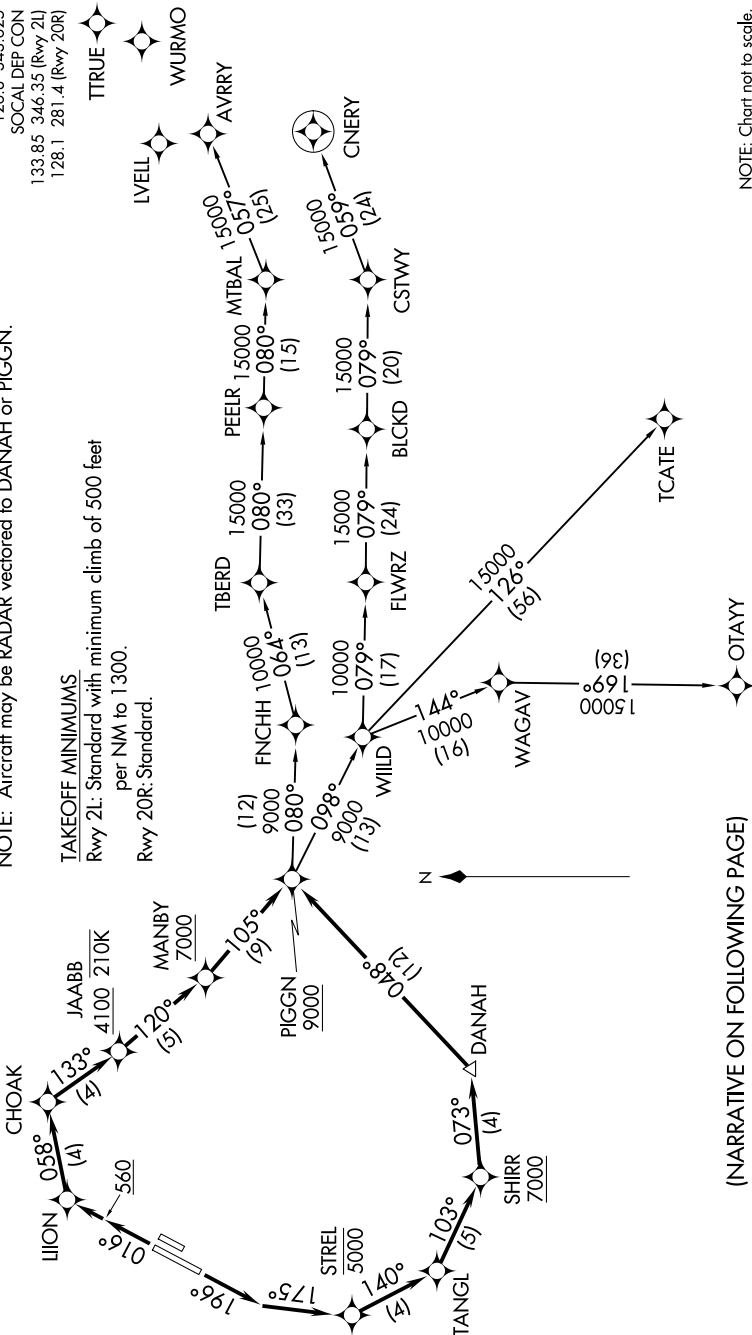
TAKEOFF MINIMUMS

Rwy 2L: Standard with minimum climb of 500 feet

per NM to 1300.

Rwy 20R: Standard.

TOP ALTITUDE:
13000



(NARRATIVE ON FOLLOWING PAGE)

NOTE: Chart not to scale.

SW-3, 15 MAY 2025 to 12 JUN 2025