

OHSEA THREE ARRIVAL (RNAV) Transition Routes

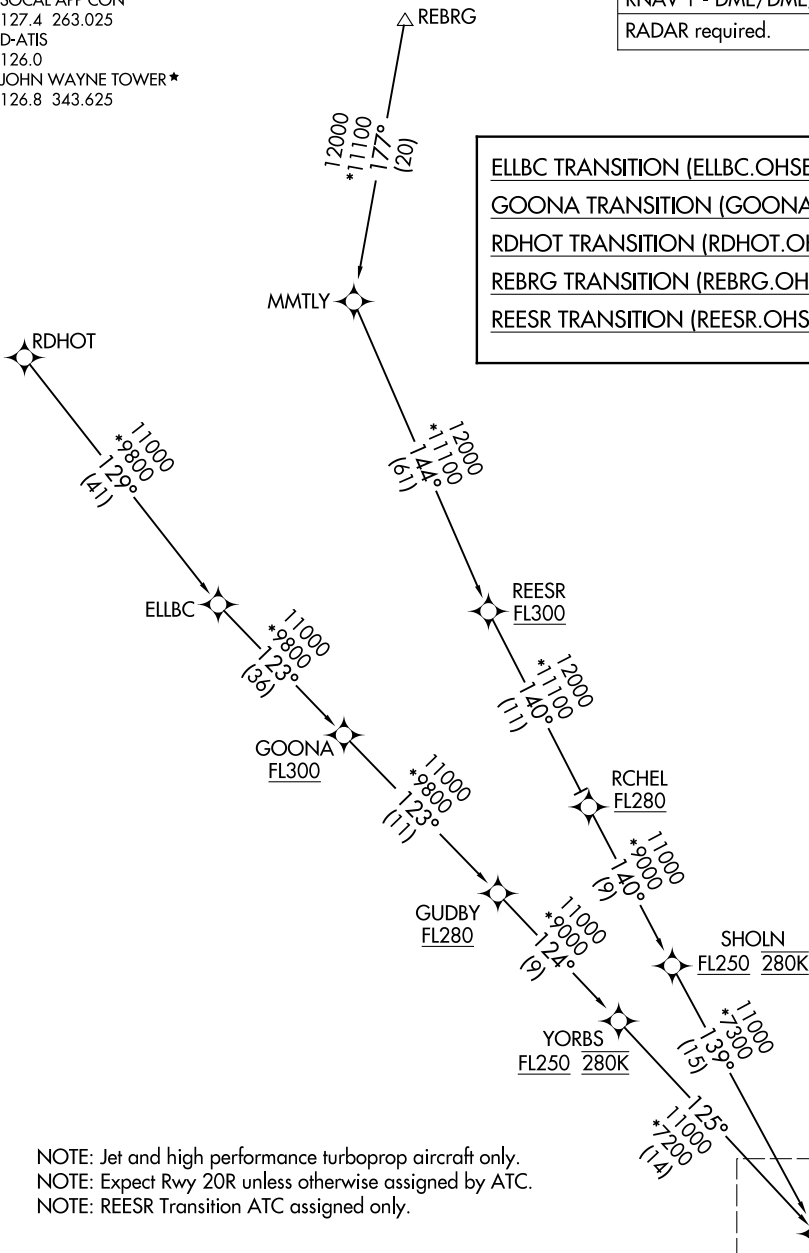
SOCAL APP CON
127.4 263.025
D-ATIS
126.0
JOHN WAYNE TOWER ★
126.8 343.625

RNAV 1 - DME/DME/IRU or GPS.
RADAR required.

- ELLBC TRANSITION (ELLBC.OHSEA3)
- GOONA TRANSITION (GOONA.OHSEA3)
- RDHOT TRANSITION (RDHOT.OHSEA3)
- REBRG TRANSITION (REBRG.OHSEA3)
- REESR TRANSITION (REESR.OHSEA3)

SW-3, 15 MAY 2025 to 12 JUN 2025

SW-3, 15 MAY 2025 to 12 JUN 2025



NOTE: Jet and high performance turboprop aircraft only.
NOTE: Expect Rwy 20R unless otherwise assigned by ATC.
NOTE: REESR Transition ATC assigned only.

(CONTINUED ON FOLLOWING PAGE)

NOTE: Chart not to scale.

See following page for Arrival Routes.