

LOC/DME I-SNA 111.75 Chan 54(Y)	APP CRS 196°	Rwy Idg TDZE Apt Elev	5700 54 56
---	------------------------	-----------------------------	---------------------------------------

ILS RWY 20R (SA CAT I)

JOHN WAYNE/ORANGE COUNTY (SNA)

⚠ Requires specific OPSPEC, MSPEC, or LOA approval.
Procedure NA when tower closed.

MALS
AS

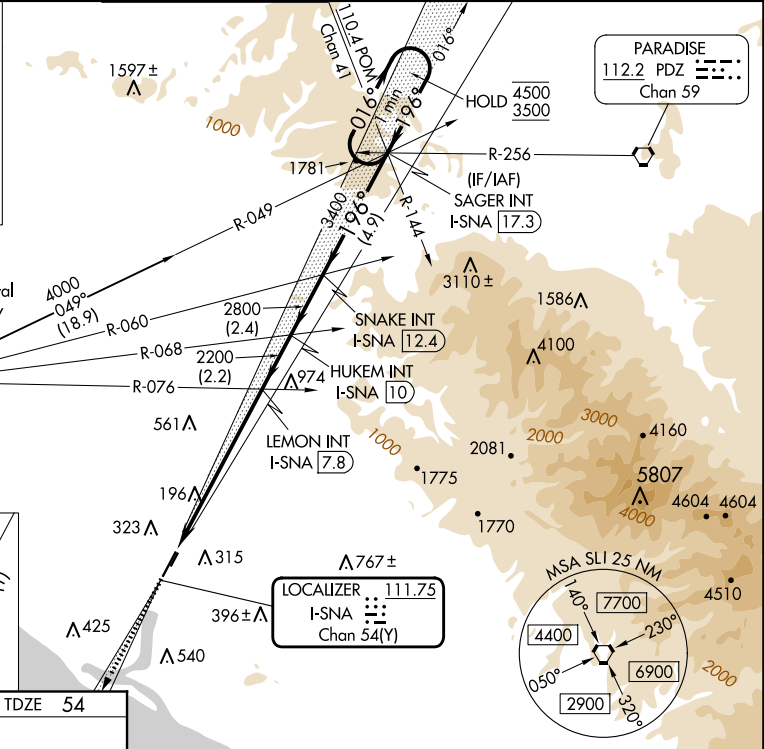
MISSED APPROACH: Climb to 3000 on I-SNA LOC south course (196°) to MINOE INT/I-SNA 10.9 DME.

D-ATIS 126.0	SOCAL APP CON 121.3 263.1	JOHN WAYNE TOWER ★ 126.8 (CTAF) 343.625	GND CON 120.8	CLNC DEL 118.0	CPDLC	UNICOM 122.95
------------------------	-------------------------------------	---	-------------------------	--------------------------	-------	-------------------------

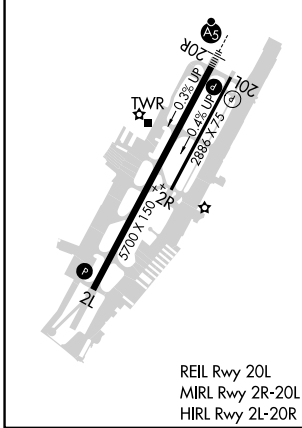
ALTERNATE MISSED APCH FIX

SEAL BEACH
SLI **115.7**
Chan 104

300° R-120



ELEV 56	D	TDZE 54
---------	----------	---------



3000 ↑ MINOE I-SNA S crs (196°)	VGSI and ILS glidepath not coincident (VGSI Angle 3.00/TCH 68).	SAGER INT I-SNA 17.3	One Minute Holding Pattern
SNAKE INT I-SNA 12.4	HUKEM INT I-SNA 10	LEMON INT I-SNA 7.8	
4500	3500	3400	2800
2200	2200	2200	2200
887'	6.6 NM	2.2 NM	2.4 NM 4.9 NM

CATEGORY	A	B	C	D
S-ILS 20R	RA 201/14 167 DA 221			

SA CATEGORY I ILS - SPECIAL AIRCREW & AIRCRAFT CERTIFICATION REQUIRED

SW-3, 15 MAY 2025 to 12 JUN 2025

SW-3, 15 MAY 2025 to 12 JUN 2025