

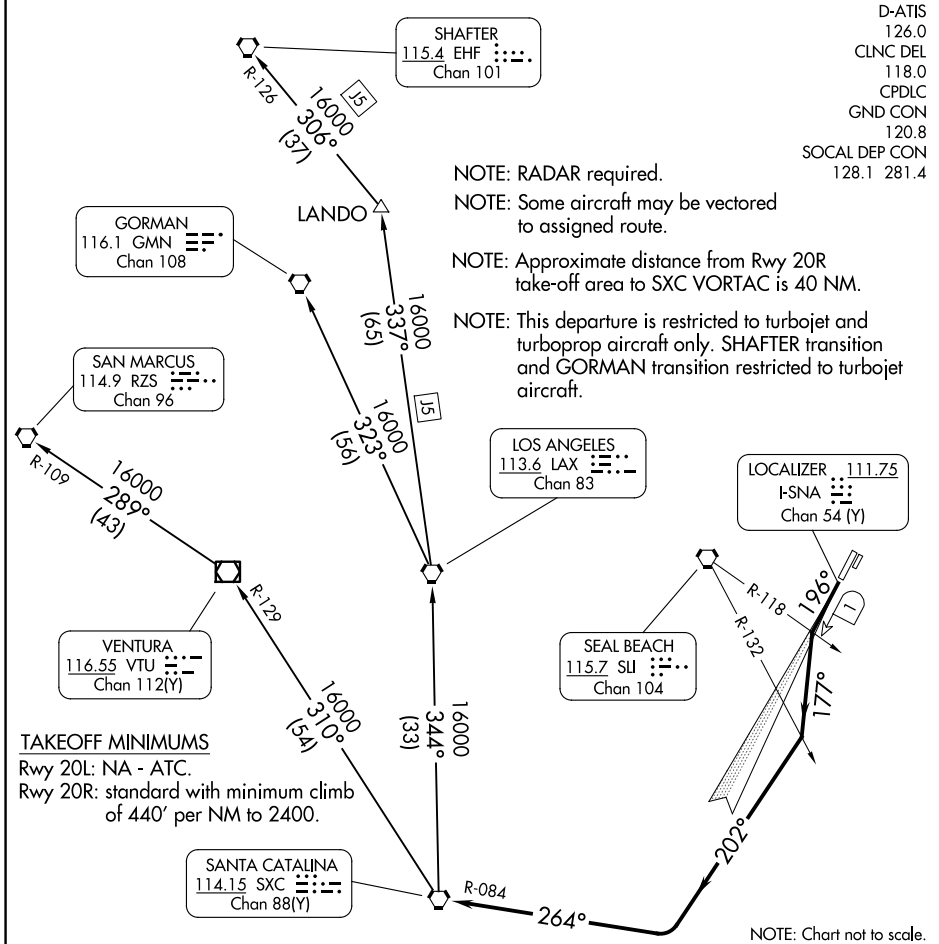
D-ATIS 126.0
CLNC DEL 118.0
CPDLC
GND CON 120.8
SOCAL DEP CON 128.1 281.4

NOTE: RADAR required.

NOTE: Some aircraft may be vectored to assigned route.

NOTE: Approximate distance from Rwy 20R take-off area to SXC VORTAC is 40 NM.

NOTE: This departure is restricted to turbojet and turboprop aircraft only. SHAFTER transition and GORMAN transition restricted to turbojet aircraft.



SW-3, 15 MAY 2025 to 12 JUN 2025

SW-3, 15 MAY 2025 to 12 JUN 2025

TAKEOFF MINIMUMS

Rwy 20L: NA - ATC.
Rwy 20R: standard with minimum climb of 440' per NM to 2400.

DEPARTURE ROUTE DESCRIPTION

TAKEOFF RUNWAY 20R: Climb heading 196° or I-SNA localizer south course to I-SNA 1 DME fix or SLI R-118, turn left heading 177°, cross SLI R-132 then turn right heading 202°, intercept and proceed via SXC R-084 to SXC VORTAC, thence

. . . . via (transition) or (assigned route). Expect filed altitude ten minutes after departure.

GORMAN TRANSITION (CHANL3.GMN): From over SXC VORTAC on SXC R-344 to LAX VORTAC, then on LAX R-323 to GMN VORTAC.

SAN MARCUS TRANSITION (CHANL3.RZS): From over SXC VORTAC on SXC R-310 and VTU R-129 to VTU VOR/DME, then on VTU R-289 and RZS R-109 to RZS VORTAC.

SHAFTER TRANSITION (CHANL3.EHF): From over SXC VORTAC on SXC R-344 to LAX VORTAC, then on LAX R-337 to LANDO INT, then on EHF R-126 to EHF VORTAC.