

VOR SSF <b>108.4</b>	APP CRS <b>337°</b>	Rwy Idg <b>3530</b> TDZE <b>571</b> Apt Elev <b>578</b>
-------------------------	------------------------	---

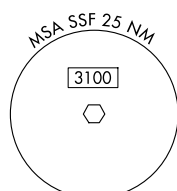
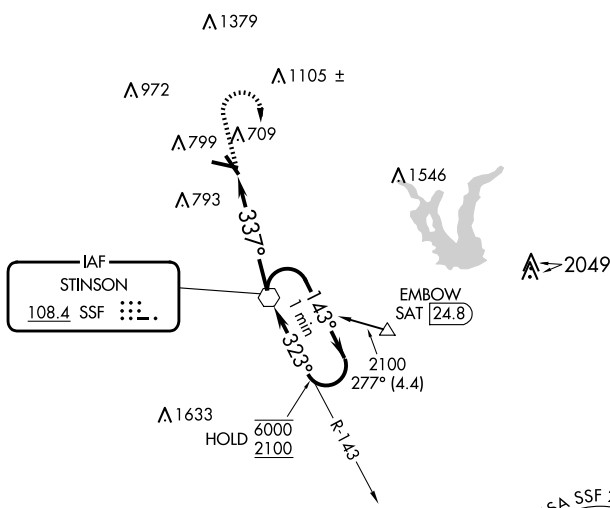
# VOR RWY 32

STINSON MUNI (SSF)

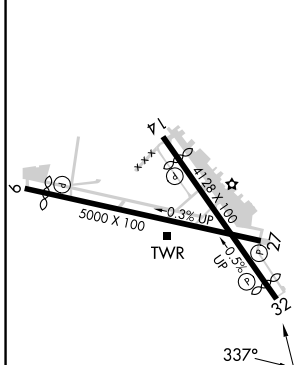
**▼** Rwy 32 helicopter visibility reduction below 1 SM NA. Straight-in Rwy 32 NA at night, Circling Rwy 9, 14, and 32 NA at night.

**MISSED APPROACH:** Climb to 1400 then climbing right turn to 2500 direct SSF VOR and hold.

ATIS <b>128.8</b>	SAN ANTONIO APP CON <b>125.7 290.225</b>	STINSON TOWER* <b>118.2(CTAF) 379.9</b>	GND CON <b>121.7 379.9</b>	CLNC DEL <b>121.7</b> (When twr closed)	UNICOM <b>122.95</b>
----------------------	---	--	-------------------------------	---	-------------------------

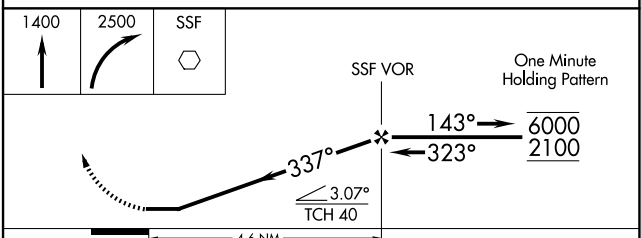


ELEV 578	<b>D</b>	TDZE 571
----------	----------	----------



REIL Rws 9, 14, 27 and 32  
MIRL Rws 9-27 and 14-32  
FAF to MAP 4.6 NM

Knots	60	90	120	150	180
Min:Sec	4:36	3:04	2:18	1:50	1:32



CATEGORY	A	B	C	D
S-32	1020-1 449 (500-1)		1020-1 449 (500-1 3/8)	NA
CIRCLING	1040-1 462 (500-1)	1120-1 542 (600-1)	1260-2 682 (700-2)	NA

SC-3, 15 MAY 2025 to 12 JUN 2025

SC-3, 15 MAY 2025 to 12 JUN 2025