

RNAV (GPS) RWY 32

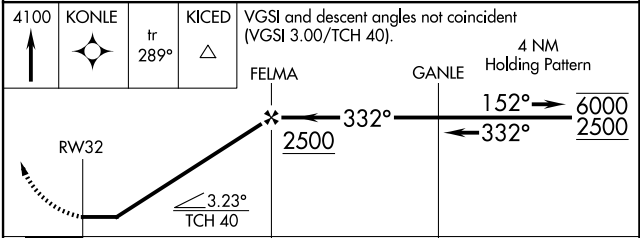
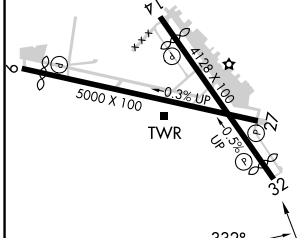
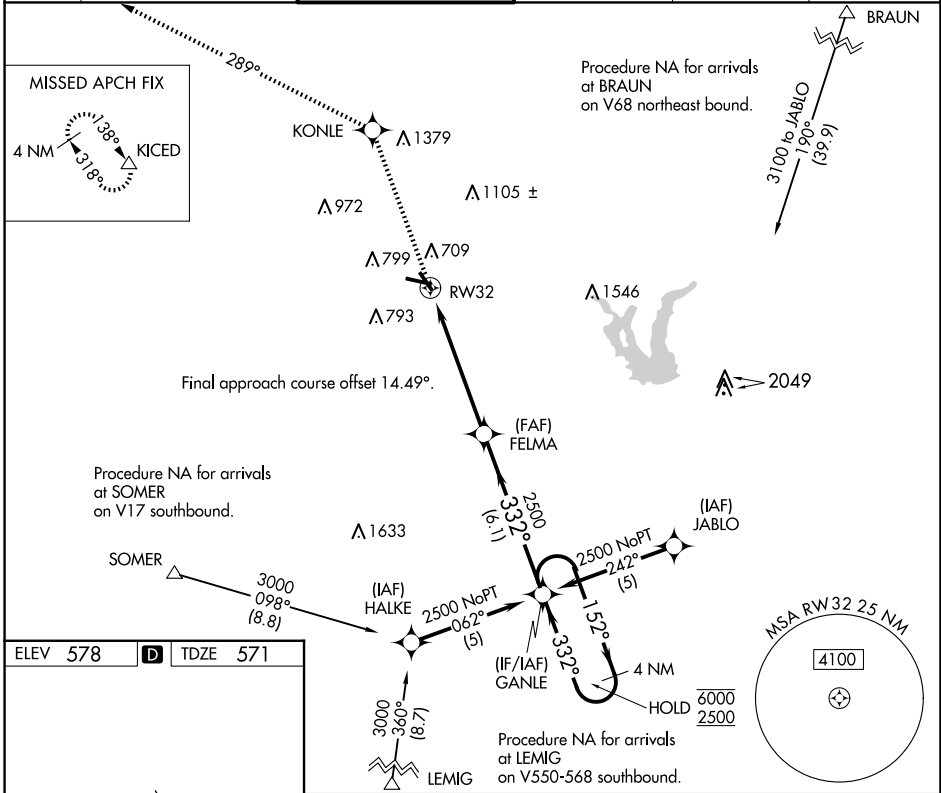
STINSON MUNI (SSF)

APP CRS 332°	Rwy Idg TDZE Apt Elev	3530 571 578
------------------------	-----------------------------	---

RNP APCH-GPS.
 ▼ Rwy 32 helicopter visibility reduction below 1 SM NA. Straight-in Rwy 32 NA at night, Circling Rwy 9, 14, and 32 NA at night.

MISSED APPROACH: Climb to 4100 direct KONLE and on track 289° to KICED and hold.

ATIS 128.8	SAN ANTONIO APP CON 125.7 290.225	STINSON TOWER ★ 118.2 (CTAF) 379.9	GND CON 121.7 379.9	CLNC DEL 121.7 (When twr closed)	UNICOM 122.95
----------------------	---	--	-------------------------------	---	-------------------------



CATEGORY	A	B	C	D
LNAV MDA	1020-1	449 (500-1)	1020-1 3/8 449 (500-1 3/8)	NA
CIRCLING	1040-1 462 (500-1)	1120-1 542 (600-1)	1260-2 682 (700-2)	NA

SC-3, 15 MAY 2025 to 12 JUN 2025

SC-3, 15 MAY 2025 to 12 JUN 2025