

ALAMO FOUR DEPARTURE

RADAR required.

**TOP ALTITUDE:
ASSIGNED BY ATC**

SAN ANTONIO DEP CON
125.7 290.225
ATIS
128.8
CLNC DEL (When twr closed)
121.7
GND CON
121.7 379.9
STINSON TOWER *
118.2 379.9

TAKEOFF MINIMUMS

Rwy 14, 32: Standard.

Rwy 9: Standard with minimum climb of 230'/NM to 1900.

Rwy 27: 300-1½ or standard with minimum climb of 225'/NM to 900, or alternatively, with standard takeoff minimums and a normal 200'/NM climb gradient, takeoff must occur no later than 1800' prior to DER.

COWBOY
116.2 CVE
Chan 109

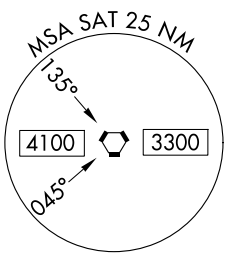
BROWNWOOD
113.55 BWD
Chan 82 (Y)

GOOCH SPRINGS
112.5 AGJ
Chan 72

CENTEX
112.8 CWK
Chan 75

STONEWALL
113.8 STV
Chan 85

NOTE: GOBBY Transition: Right turn at GOBBY NA for ACFT REQ FL240 and ABV.
NOTE: HENLY Transition: Right turn at HENLY NA for ACFT REQ FL240 and ABV.



SAN ANTONJO
116.8 SAT
Chan 115

(CONTINUED ON FOLLOWING PAGE)

NOTE: Chart not to scale

ALAMO FOUR DEPARTURE

SC-3, 15 MAY 2025 to 12 JUN 2025

SC-3, 15 MAY 2025 to 12 JUN 2025