

HI-TACAN Z RWY 16

TACAN KSY Chan 57	APCH CRS 151°	Rwy ldg 11,550 TDZE 690 Arpt Elev 690
-----------------------------	-------------------------	--

[USAF]

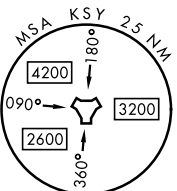
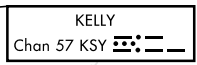
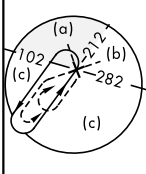
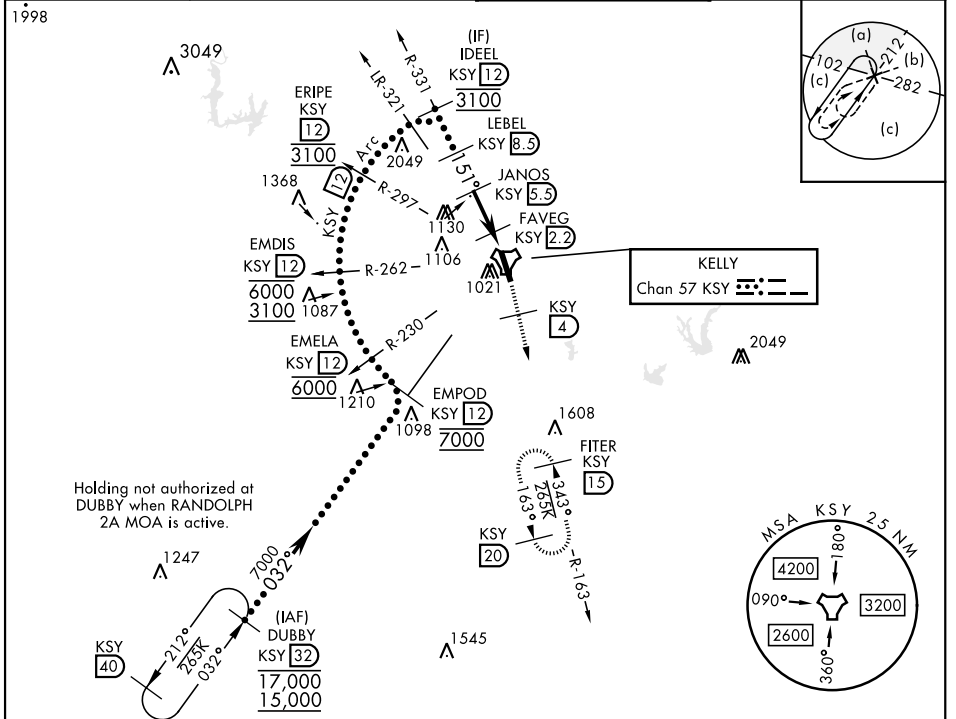
KELLY FLD (KSKF)

▼ * When ALS inop, increase RVR to 60 and vis to 1½ miles.
 ** Circling not authorized E of Rwy 16-34.



MISSED APPROACH: Climb to 2500 via KSY TACAN R-163 until 4 DME, then continue climb to 3000 to FITER/15 DME and hold.

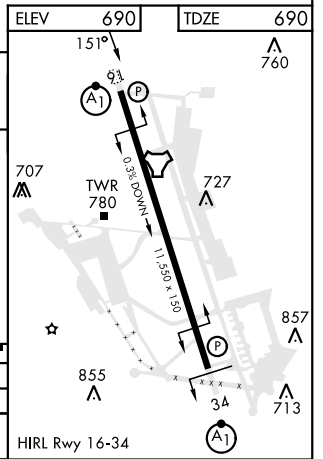
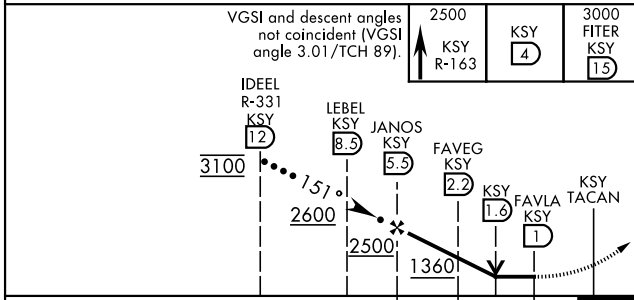
ATIS 120.45 273.5	SAN ANTONIO APP CON 118.05 353.5	TOWER 124.3 322.35	GND CON 121.8 289.4
-----------------------------	--	------------------------------	-------------------------------



SC-3, 15 MAY 2025 to 12 JUN 2025

SC-3, 15 MAY 2025 to 12 JUN 2025

ELEV 690	TDZE 690
----------	----------



CATEGORY	C	D	E
S-16*	1100/40	410	(500-34)
CIRCLING**	1340-134 650 (700-134)	1900-3 1210 (1300-3)	

HI-TACAN Z RWY 16