

HI-ILS or LOC/DME Z RWY 16

LOC I-SKF 110.1	APCH CRS 158°	Rwy Idg 11,550
		TDZE 690
		Arprt Elev 690

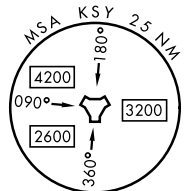
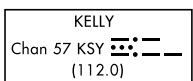
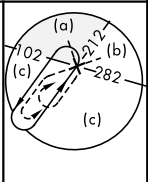
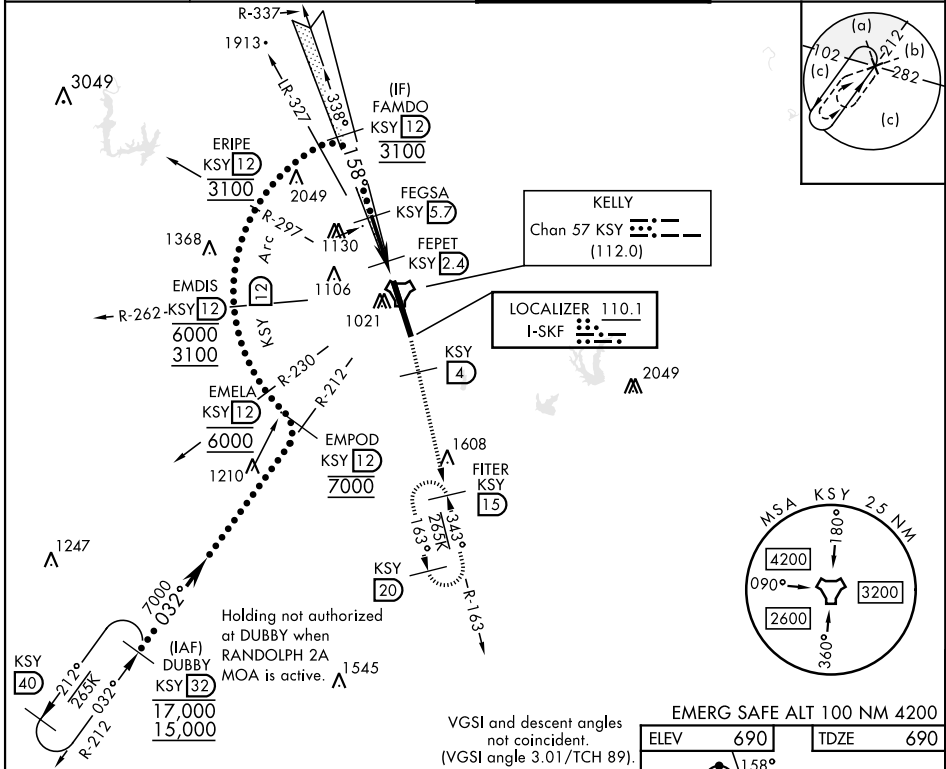
[USAF]

KELLY FLD (KSKF)

▼ *When ALS inop, increase RVR to 40 and vis to ¼ mile.
 **When ALS inop, increase RVR to 60 and vis to 1½ miles.
 ***Circling not authorized E of Rwy 16-34.

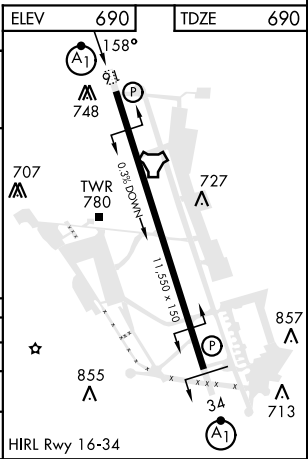
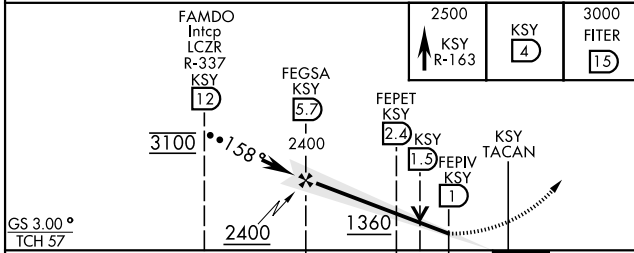
ALSF-1 (A1) MISSED APPROACH: Climb to 2500 via KSY R-163 until 4 DME, then continue climb to 3000 to FITER/15 DME and hold.

ATIS 120.45 273.5	SAN ANTONIO APP CON 118.05 353.5	KELLY TOWER 124.3 322.35	GND CON 121.8 289.4
-----------------------------	--	------------------------------------	-------------------------------



VGSI and descent angles not coincident.
 (VGSI angle 3.01/TCH 89).

EMERG SAFE ALT 100 NM 4200



CATEGORY	C	D	E
S-ILS 16 *	890/24	200	(200-½)
S-LOC/ DME 16 **	1080/35	390	(400-¾)
CIRCLING ***	1340-1¼ 650 (700-1¾)	1900-3	1210 (1300-3)

HI-ILS or LOC/DME Z RWY 16

SC-3, 15 MAY 2025 to 12 JUN 2025

SC-3, 15 MAY 2025 to 12 JUN 2025