

LOC/DME I-ANT 110.9 Chan 46	APP CRS 128°	Rwy 13R Idg 8502 TDZE 809 Apt Elev 809
---	------------------------	---

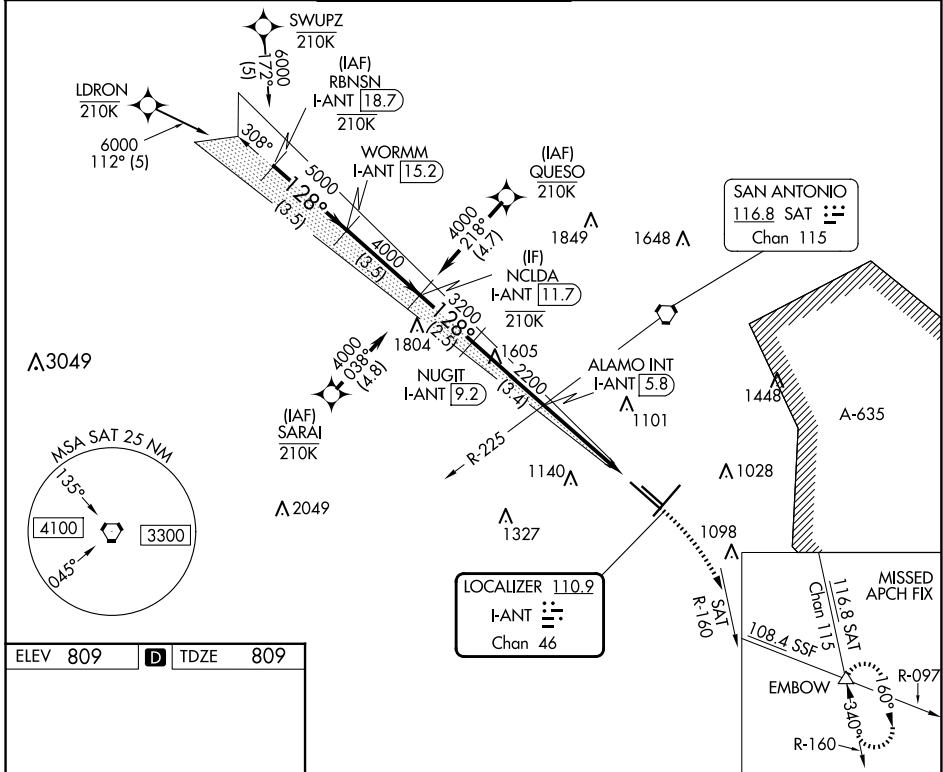
ILS RWY 13R (CAT II)
SAN ANTONIO INTL (SAT)

RNP APCH-GPS. From LDRON, SWUPZ, SARAI, QUESO.
RNAV 1-GPS or RADAR required for procedure entry. DME required.

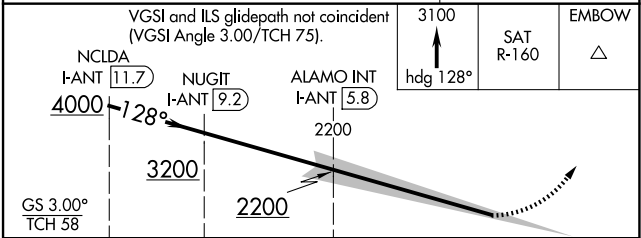
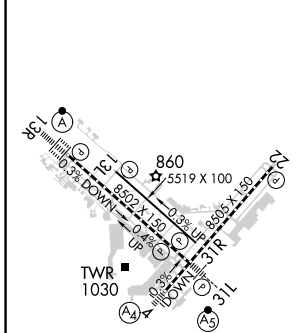
ALSF-2
A

MISSED APPROACH: Climb to 3100 on heading 128° and SAT VORTAC R-160 to EMBOW INT and hold.

D-ATIS 118.9	SAN ANTONIO APP CON 125.1 307.0	SAN ANTONIO TOWER 119.8 257.8	GND CON 121.9 348.6	CLNC DEL 126.7	CPDLC
------------------------	---	---	-------------------------------	--------------------------	-------



ELEV 809	D TDZE 809
-----------------	--------------------------



CATEGORY	A	B	C	D
S-ILS 13R	RA 104/12 100 DA 909			

CATEGORY II ILS - SPECIAL AIRCREW & AIRCRAFT CERTIFICATION REQUIRED

TDZ/CL Rwy 13R
REIL Rws 13L, 22 and 31R
HIRL Rws 4-22 and 13R-31L
MIRL Rwy 13L-31R

SC-3, 15 MAY 2025 to 12 JUN 2025

SC-3, 15 MAY 2025 to 12 JUN 2025