

SPANE EIGHT ARRIVAL

AL-365 (FAA)

SALT LAKE CITY INTL (SLC)
SALT LAKE CITY, UTAH

SW-4, 15 MAY 2025 to 12 JUN 2025

ARRIVAL ROUTE DESCRIPTION

HELPR TRANSITION (HELPR.SPANE8): From over HELPR on FFU R-100 to SPANE, thence

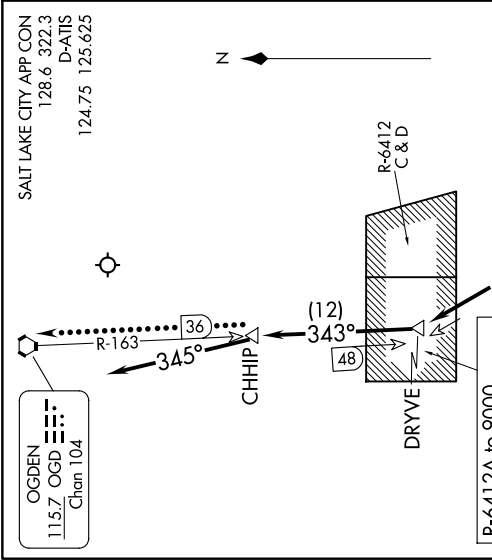
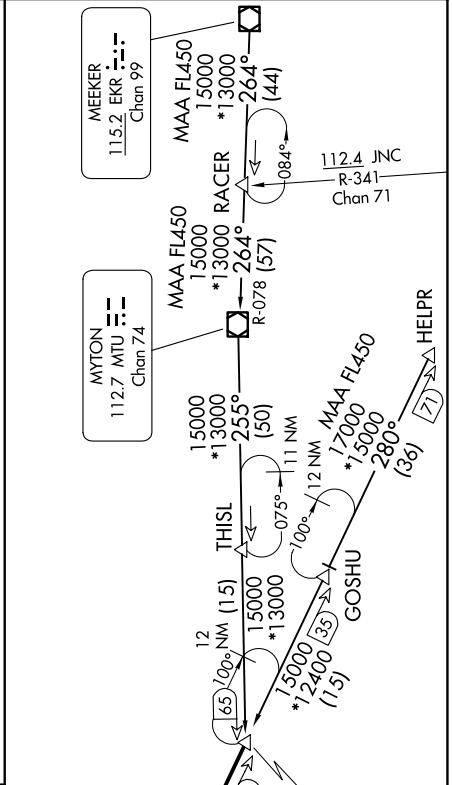
MEEKER TRANSITION (EKR.SPANE8): From over EKR VOR/DME on EKR R-264 to RACER, then on EKR R-264 and MTU R-078 to MTU VOR/DME, then on MTU R-255 to SPANE, thence

LANDING NORTH: From SPANE on FFU R-100 to BOAGY, then to FFU VORTAC. Expect ILS RWY 34R approach.

LANDING SOUTH: From SPANE on FFU R-100 to BOAGY, then to FFU VORTAC, then on FFU R-314 to DRYVE, then on OGD R-163 to CHHIP. After CHHIP, fly heading 345° for vectors to ILS or Visual RWY 16R approach.

LOST COMMUNICATIONS

LANDING SOUTH: In the event of lost communications, at CHHIP proceed direct OGD VORTAC. Maintain 12000 until OGD VORTAC.



SPANE EIGHT ARRIVAL

(SPANE.SPANE8) 16MAY24

SALT LAKE CITY, UTAH
SALT LAKE CITY INTL (SLC)

SW-4, 15 MAY 2025 to 12 JUN 2025

NOTE: DME required.
NOTE: Chart not to scale.