

SEVYR THREE DEPARTURE

AL-365 (FAA)

SALT LAKE CITY INTL (SLC)
SALT LAKE CITY, UTAH

SW-4, 15 MAY 2025 to 12 JUN 2025

D-ATIS 124.75 125.625
CINCDEL 127.3 379.975
CPD/C 128.1 307.05

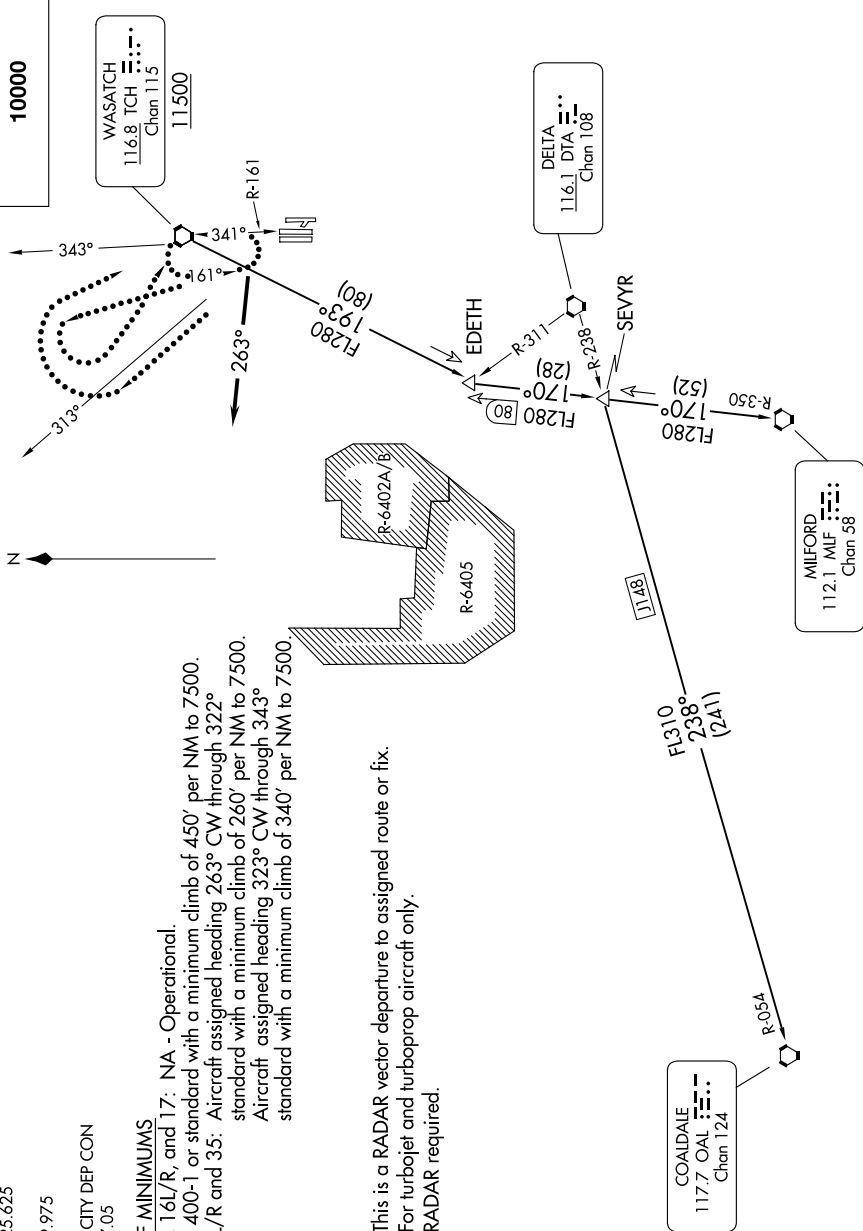
SALT LAKE CITY DEP CON

TAKEOFF MINIMUMS

Rwys 14, 16L/R, and 17: NA - Operational.
Rwy 32: 400-1 or standard with a minimum climb of 450' per NM to 7500.
Rwys 34L/R and 35: Aircraft assigned heading 263° CW through 322° standard with a minimum climb of 260' per NM to 7500.
Aircraft assigned heading 323° CW through 343° standard with a minimum climb of 340' per NM to 7500.

NOTE: This is a RADAR vector departure to assigned route or fix.
NOTE: For turbojet and turboprop aircraft only.
NOTE: RADAR required.

**TOP ALTITUDE:
10000**



(CONTINUED ON FOLLOWING PAGE)

NOTE: Chart not to scale.

SW-4, 15 MAY 2025 to 12 JUN 2025

SEVYR THREE DEPARTURE

(SEVYR3.SEVYR) 17AUG17

SALT LAKE CITY, UTAH
SALT LAKE CITY INTL (SLC)