

WAAS CH 49230 W34A	APP CRS 344°	Rwy ldg TDZE 4225 Apt Elev 4231
--	------------------------	---

RNAV (GPS) Y RWY 34R

SALT LAKE CITY INTL (SLC)

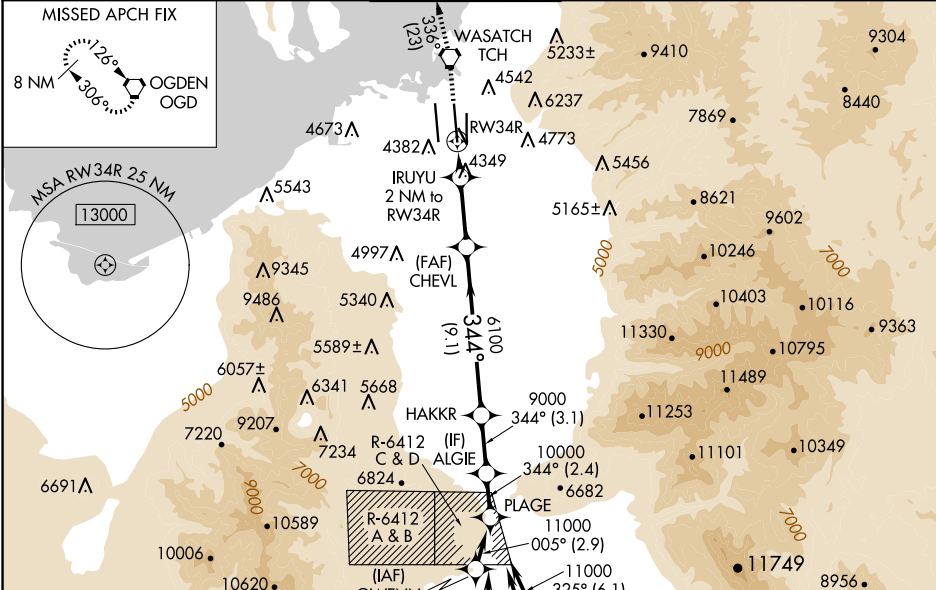
RNP APCH - GPS

Simultaneous approach authorized. For uncompensated Baro-VNAV systems, LNAV/VNAV NA below -10°C or above 49°C. Use of FD or AP providing RNAV track guidance required during simultaneous operations. LNAV procedure NA during simultaneous operations. For inop ALS, increase LPV Cat E visibility to RVR 4000, LNAV/VNAV Cat E visibility to RVR 5000, LNAV Cots C/D visibility to RVR 5500, LNAV Cat E visibility to RVR 6000. Cat E restricted to USAF/USN aircraft.



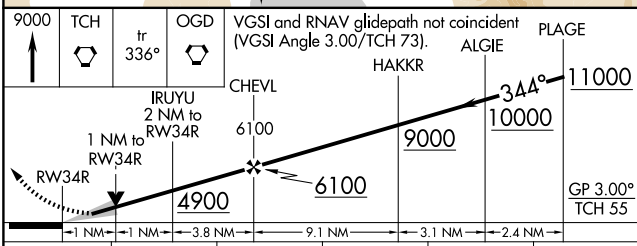
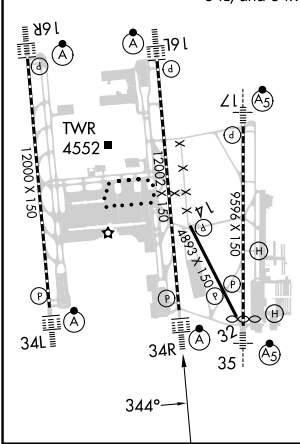
MISSED APPROACH: Climb to 9000 direct TCH VORTAC and on track 336° to OGD VORTAC and hold.

D-ATIS 124.75 125.625	SALT LAKE CITY APP CON 125.7 284.6	SALT LAKE CITY TOWER 119.05 257.8	GND CON 123.775 348.6	CLNC DEL 127.3 379.975	CPDLC
---------------------------------	--	---	---------------------------------	----------------------------------	-------



ELEV 4231	D	TDZE 4225
-----------	---	-----------

HIRL all Rwys
TDZ/CL Rwys 16L, 16R, 17, 35, 34L, and 34R



CATEGORY	A	B	C	D	E
LPV DA		4425/18	200 (200-½)		
LNAV/VNAV DA		4557/26	332 (400-½)		
LNAV MDA	4600/24	375 (400-½)	4600/35	375 (400-⅝)	4640/40 415 (500-¾)

SW-4, 15 MAY 2025 to 12 JUN 2025

SW-4, 15 MAY 2025 to 12 JUN 2025