


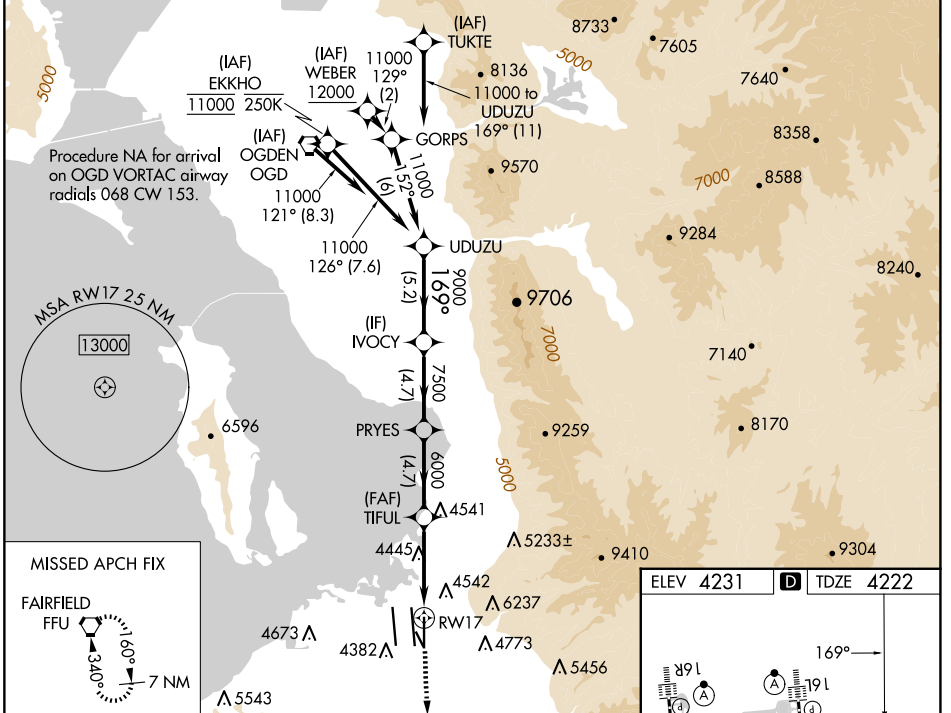
WAAS CH 82338 W17A	APP CRS 169°	Rwy Idg TDZE Apt Elev	9596 4222 4231
--	------------------------	-----------------------------	---

RNAV (GPS) Y RWY 17

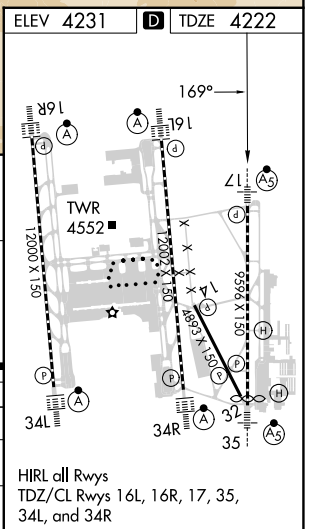
SALT LAKE CITY INTL (SLC)

<p>RNP APCH - GPS.</p> <p>▼ For uncompensated Baro-VNAV systems, LNAV/VNAV NA below -10°C or above 49°C. Simultaneous approach authorized. LNAV procedure NA during simultaneous operations. Use of FD or AP providing RNAV track guidance required during simultaneous operations. For inop ALS, increase LPV Cat E visibility to RVR 4000, LNAV/VNAV all Cats visibility to RVR 5500, and LNAV Cat C/D/E visibility to 1 3/8 SM.</p>		<p>MALSR</p> 	<p>MISSED APPROACH: Climb to 4700 then climb to 10000 direct FFU VORTAC and hold.</p>
--	--	--	---

D-ATIS 124.75 125.625	SALT LAKE CITY APP CON 125.7 284.6	SALT LAKE CITY TOWER 118.3 257.8	GND CON 121.9 348.6	CLNC DEL 127.3 379.975	CPDLC
---------------------------------	--	--	-------------------------------	----------------------------------	-------



UDUZU	VGSI and RNAV glidepath not coincident (VGSI Angle 3.00/TCH 73).	4700	10000	FFU	
11000	IVOCY	PRYES	TIFUL	1.3 NM to RW17	
GP 3.00° TCH 55	9000	7500	6000	RW17	
5.2 NM	4.7 NM	4.7 NM	4.1 NM	1.3	
CATEGORY	A	B	C	D	E
LPV DA	4422/18 200 (200-1/2)				
LNAV/VNAV DA	4571/30 349 (400-5/8)		4574/30 352 (400-5/8)		
LNAV MDA	4700/24 478 (500-1/2)	4700/50 478 (500-1)			



SW-4, 15 MAY 2025 to 12 JUN 2025

SW-4, 15 MAY 2025 to 12 JUN 2025