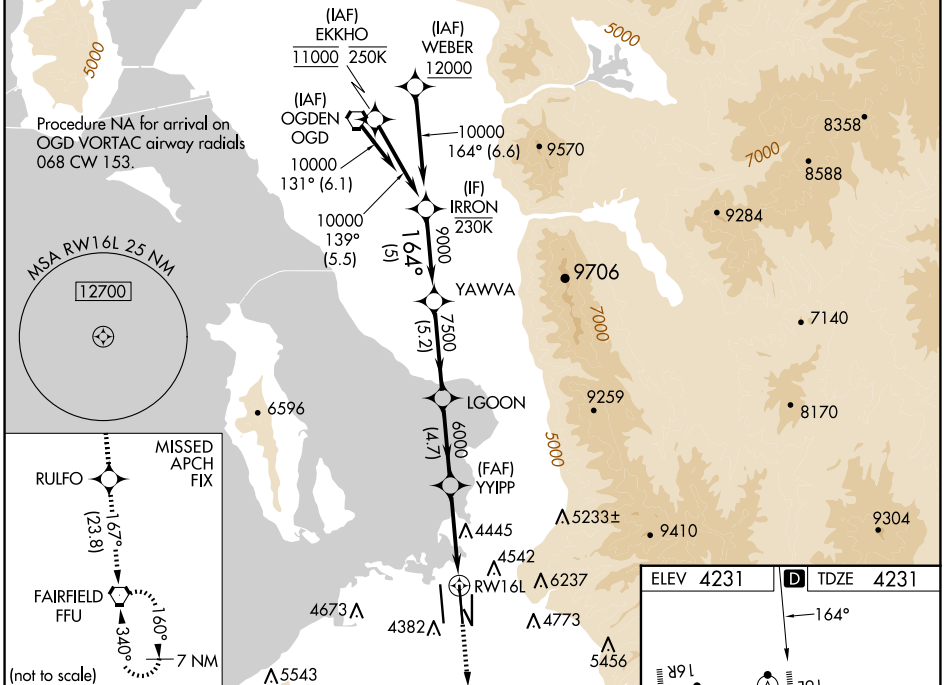


WAAS CH <b>70546</b> <b>W16B</b>	APP CRS <b>164°</b>	Rwy Idg TDZE Apt Elev	<b>12002</b> <b>4231</b> <b>4231</b>
--	------------------------	-----------------------------	--

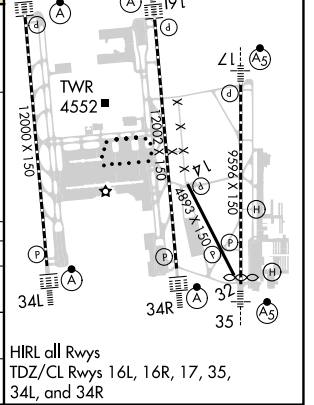
# RNAV (GPS) Y RWY 16L

SALT LAKE CITY INTL (SLC)

RNP APCH - GPS.		ALSIF-2		MISSED APPROACH: Climb to 10000 direct RULFO and on track 167° to FFU VORTAC and hold.	
<p>▼ LNAV procedure NA during simultaneous operations. Simultaneous approach authorized. Use of FD or AP required during simultaneous operations. For uncompensated Baro-VNAV systems, LNAV/VNAV NA below -10°C or above 49°C. For inop ALS, increase LPV Cat E visibility to RVR 4000, increase LNAV/VNAV Cat A visibility to RVR 4500, increase Cats C/D visibility to RVR 5500, increase Cat E visibility to 6000, and increase LNAV Cat E visibility to 1½ SM.</p>					
D-ATIS <b>124.75 125.625</b>	SALT LAKE CITY APP CON <b>125.7 284.6</b>	SALT LAKE CITY TOWER <b>119.05 257.8</b>	GND CON <b>123.775 348.6</b>	CLNC DEL <b>127.3 379.975</b>	CPDLC



IRRON					RULFO					FFU														
10000					tr 167°																			
GP 3.00°					1.4 NM to RW16L					RW16L														
TCH 55																								
5 NM					5.2 NM					4.7 NM					4 NM					1.4 NM				
CATEGORY		A		B		C		D		E														
LPV DA		4431/18										200 (200-½)												
LNAV/VNAV DA		4537/24		4559/26		4574/30		4593/35		4634/40														
		306 (400-½)		328 (400-½)		343 (400-¾)		362 (400-¾)		403 (500-¾)														
LNAV MDA		4760/24		529 (600-½)		4760/55		529 (600-1)																



SW-4, 15 MAY 2025 to 12 JUN 2025

SW-4, 15 MAY 2025 to 12 JUN 2025