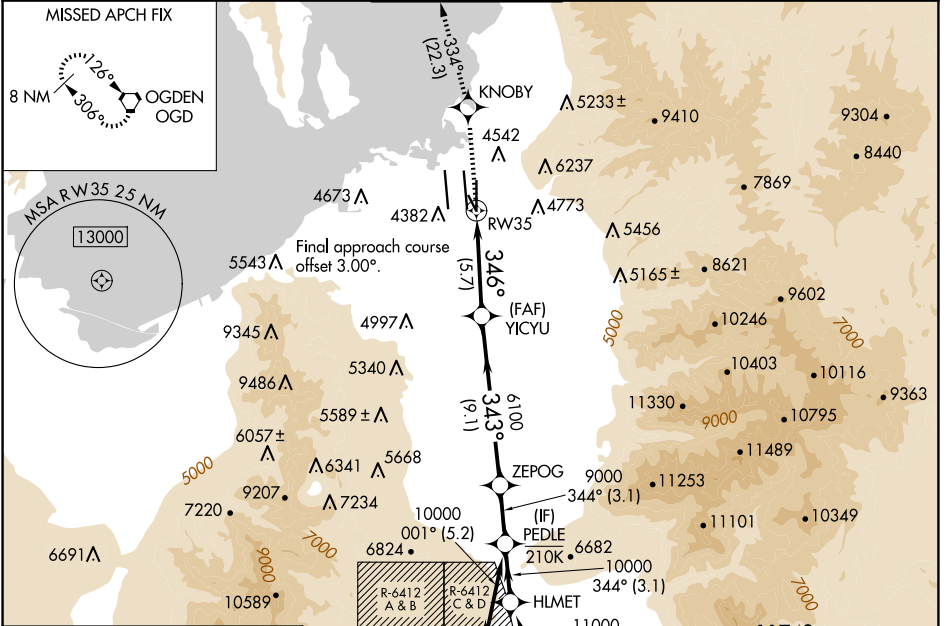


APP CRS	Rwy Idg	9272
346°	TDZE	4227
	Apt Elev	4231

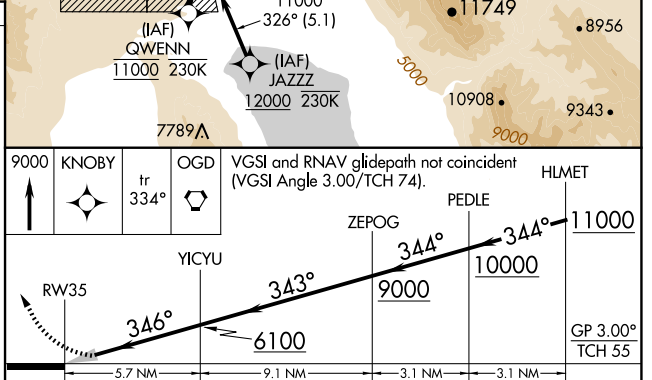
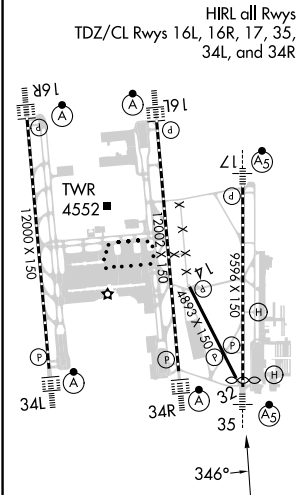
RNAV (RNP) Z RWY 35

SALT LAKE CITY INTL (SLC)

RNP AR APCH - GPS.		MALSR	MISSED APPROACH: Climb to 9000 direct KNOBY and on track 334° to OGD VORTAC and hold.		
<p>▼ For uncompensated Baro-VNAV systems, procedure NA below -10°C or above 54°C. For inop ALS, increase RNP 0.20 all Cats visibility to RVR 4500.</p>			D-ATIS	SALT LAKE CITY APP CON	SALT LAKE CITY TOWER
124.75 125.625		125.7 284.6	118.3 257.8	121.9 348.6	127.3 379.975
					CPDLC



ELEV	4231	TDZE	4227
------	-------------	------	-------------



CATEGORY	A	B	C	D	E
RNP 0.20 DA		4502/24	275 (300-½)		
RNP 0.30 DA		4625/35	398 (400-¾)		

AUTHORIZATION REQUIRED

SW-4, 15 MAY 2025 to 12 JUN 2025

SW-4, 15 MAY 2025 to 12 JUN 2025