

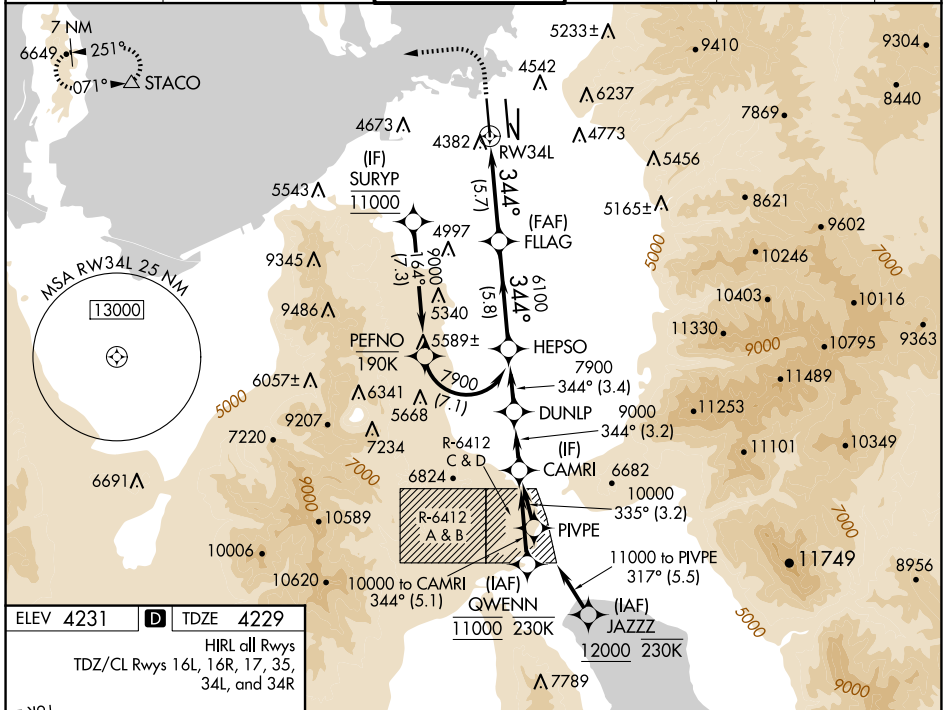
APP CRS	Rwy Idg	12000
344°	TDZE	4229
	Apt Elev	4231

RNAV (RNP) Z RWY 34L

SALT LAKE CITY INTL (SLC)

RNP AR APCH - GPS. Authorization required. From PEFNO: RF.		ALSF-2	MISSED APPROACH: Climb to 4800 then climbing left turn to 8100 direct STACO and hold.
▼ For uncompensated Baro-VNAV systems, procedure NA below -10°C or above 54°C. Simultaneous approach authorized. For inop ALS, increase RNP 0.10, RNP 0.20 visibility all Cats to RVR 4500, RNP 0.30 visibility all Cats to RVR 6000.			*Missed approach requires minimum climb of 250 feet per NM to 4700.

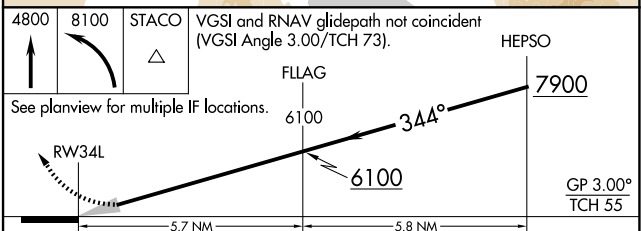
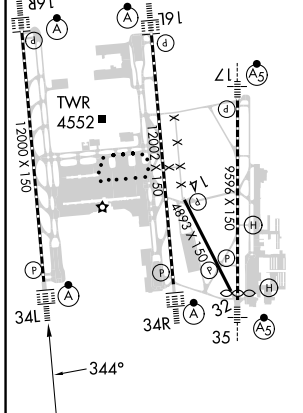
D-ATIS	SALT LAKE CITY APP CON	SALT LAKE CITY TOWER	GND CON	CLNC DEL	CPDLC
124.75 125.625	125.7 284.6	132.65 336.4	123.775 348.6	127.3 379.975	



SW-4, 15 MAY 2025 to 12 JUN 2025

SW-4, 15 MAY 2025 to 12 JUN 2025

ELEV 4231	D	TDZE 4229
HIRL all Rwys		
TDZ/CL Rwys 16L, 16R, 17, 35, 34L, and 34R		



CATEGORY	A	B	C	D
RNP 0.10 DA*		4490/24	261 (300-½)	
RNP 0.20 DA		4530/24	301 (300-½)	
RNP 0.30 DA		4643/40	414 (500-¾)	

AUTHORIZATION REQUIRED