

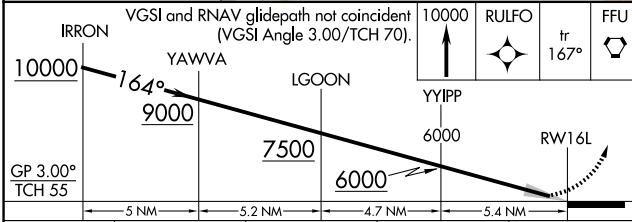
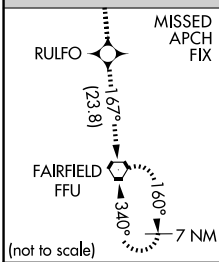
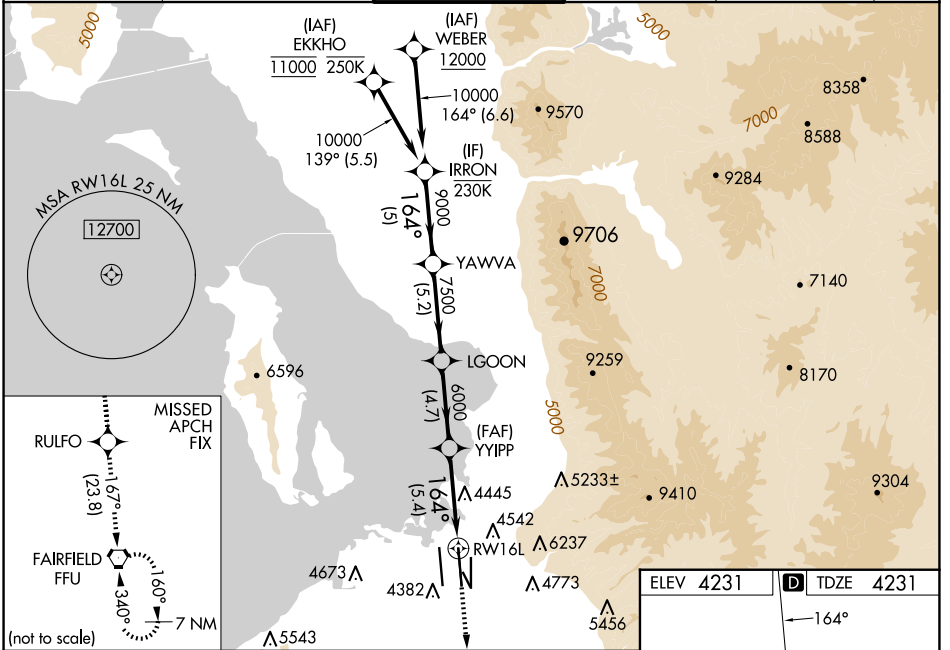
APP CRS 164°	Rwy Idg 12002
	TDZE 4231
	Apt Elev 4231

RNAV (RNP) Z RWY 16L

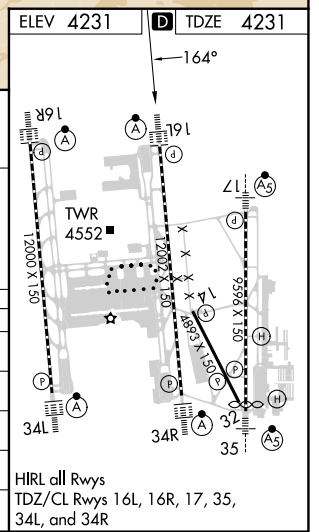
SALT LAKE CITY INTL (SLC)

<p>RNP AR APCH - GPS.</p> <p>▼ For uncompensated Baro-VNAV systems, procedure NA below -10°C or above 54°C. Simultaneous approach authorized. For inop ALS, increase RNP 0.16 all Cats visibility RVR to 5500, increase RNP 0.16 (323) all Cats visibility to RVR 4500 and increase RNP 0.30 all Cats visibility to RVR 5500.</p>	<p>ALSIF-2</p>	<p>MISSED APPROACH: Climb to 10000 direct RULFO and on track 167° to FFU VORTAC and hold.</p> <p>* Missed approach requires minimum climb of 323 feet per NM to 4740.</p> <p># Missed approach requires minimum climb of 256 feet per NM to 4760.</p>

D-ATIS 124.75 125.625	SALT LAKE CITY APP CON 125.7 284.6	SALT LAKE CITY TOWER 119.05 257.8	GND CON 123.775 348.6	CLNC DEL 127.3 379.975	CPDLC
---------------------------------	--	---	---------------------------------	----------------------------------	-------



CATEGORY	A	B	C	D
RNP 0.16 DA*	4516/24 285 (300-½)			NA
RNP 0.30 DA#	4565/26 334 (400-½)			
RNP 0.16 DA	4573/30 342 (400-¾)			NA
RNP 0.30 DA	4592/35 361 (400-¾)			



AUTHORIZATION REQUIRED

SW-4, 15 MAY 2025 to 12 JUN 2025

SW-4, 15 MAY 2025 to 12 JUN 2025