

(QWENN.QWENN6) 25051

# QWENN SIX ARRIVAL (RNAV)

AL-365 (FAA)

SALT LAKE CITY INTL (SLC)  
SALT LAKE CITY, UTAH

## ARRIVAL ROUTE DESCRIPTION

BRYCE CANYON TRANSITION (BCE.QWENN6)  
MILFORD TRANSITION (MLF.QWENN6)

From QWENN on track 344°. Expect RADAR vectors for ILS or RNAV approach to Rwy 34L/R, 35 or RADAR vectors to final approach course.

### LOST COMMUNICATIONS

After QWENN, proceed on the ILS or LOC RWY 34L approach.

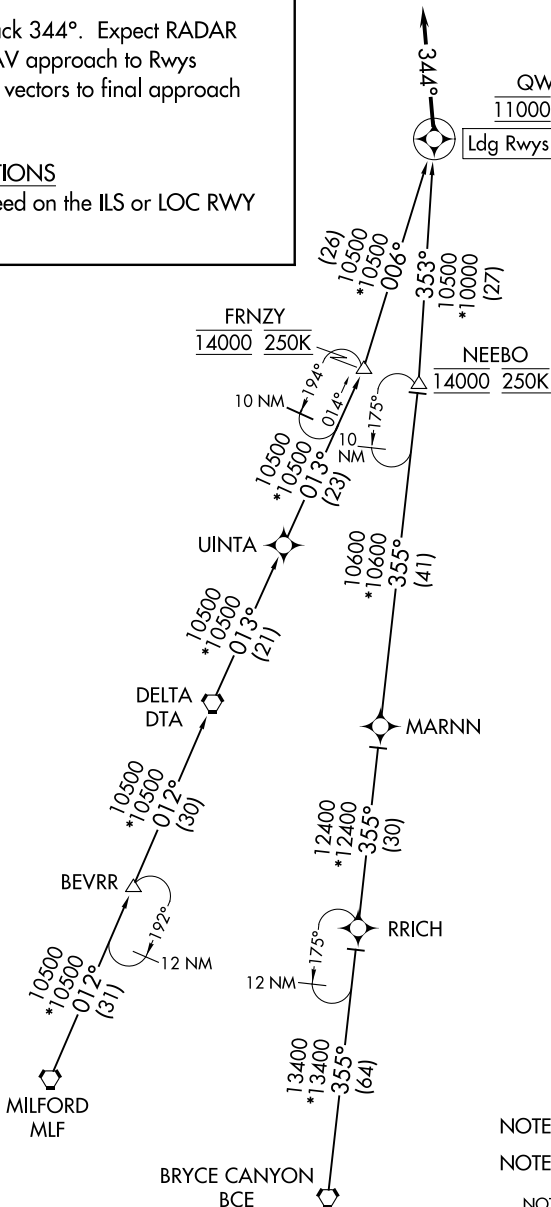
SALT LAKE CITY APP CON  
128.6 322.3  
D-ATIS  
124.75 125.625

QWENN  
11000 230K

Ldg Rwy 34L/R, 35

RNAV 1 - GPS.

RADAR required.



NOTE: Jet aircraft only.

NOTE: GPS required.

NOTE: Chart not to scale.

# QWENN SIX ARRIVAL (RNAV)

(QWENN.QWENN6) 20FEB25

SALT LAKE CITY, UTAH  
SALT LAKE CITY INTL (SLC)

SW-4, 15 MAY 2025 to 12 JUN 2025

SW-4, 15 MAY 2025 to 12 JUN 2025