

(PITTT.PITTT1) 25051

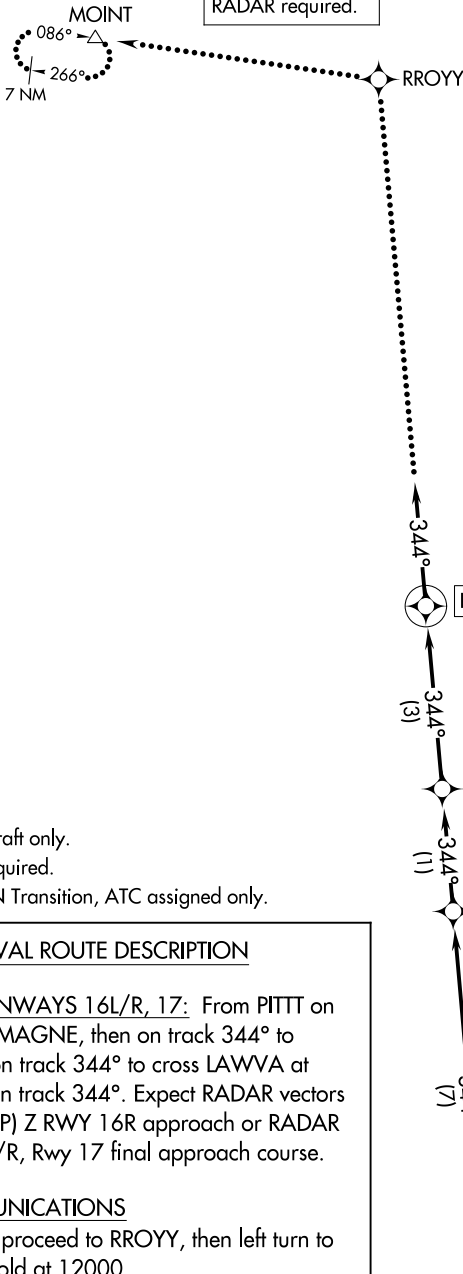
# PITTT ONE ARRIVAL (RNAV) Arrival Routes

AL-365 (FAA)

SALT LAKE CITY INTL (SLC)  
SALT LAKE CITY, UTAH

RNAV 1 - GPS.  
RADAR required.

SALT LAKE CITY APP CON  
128.1 307.05  
D-ATIS  
124.75 125.625



- NOTE: Jet aircraft only.
- NOTE: GPS required.
- NOTE: MYTON Transition, ATC assigned only.

### ARRIVAL ROUTE DESCRIPTION

LANDING RUNWAYS 16L/R, 17: From PITTT on track 344° to MAGNE, then on track 344° to QUIPA, then on track 344° to cross LAWVA at 11000, then on track 344°. Expect RADAR vectors for RNAV (RNP) Z RWY 16R approach or RADAR vectors to 16L/R, Rwy 17 final approach course.

### LOST COMMUNICATIONS

After LAWVA proceed to RROY, then left turn to MOINT and hold at 12000.

NOTE: Chart not to scale.

SW-4, 15 MAY 2025 to 12 JUN 2025

SW-4, 15 MAY 2025 to 12 JUN 2025

# PITTT ONE ARRIVAL (RNAV) Arrival Routes

(PITTT.PITTT1) 20FEB25

SALT LAKE CITY, UTAH  
SALT LAKE CITY INTL (SLC)