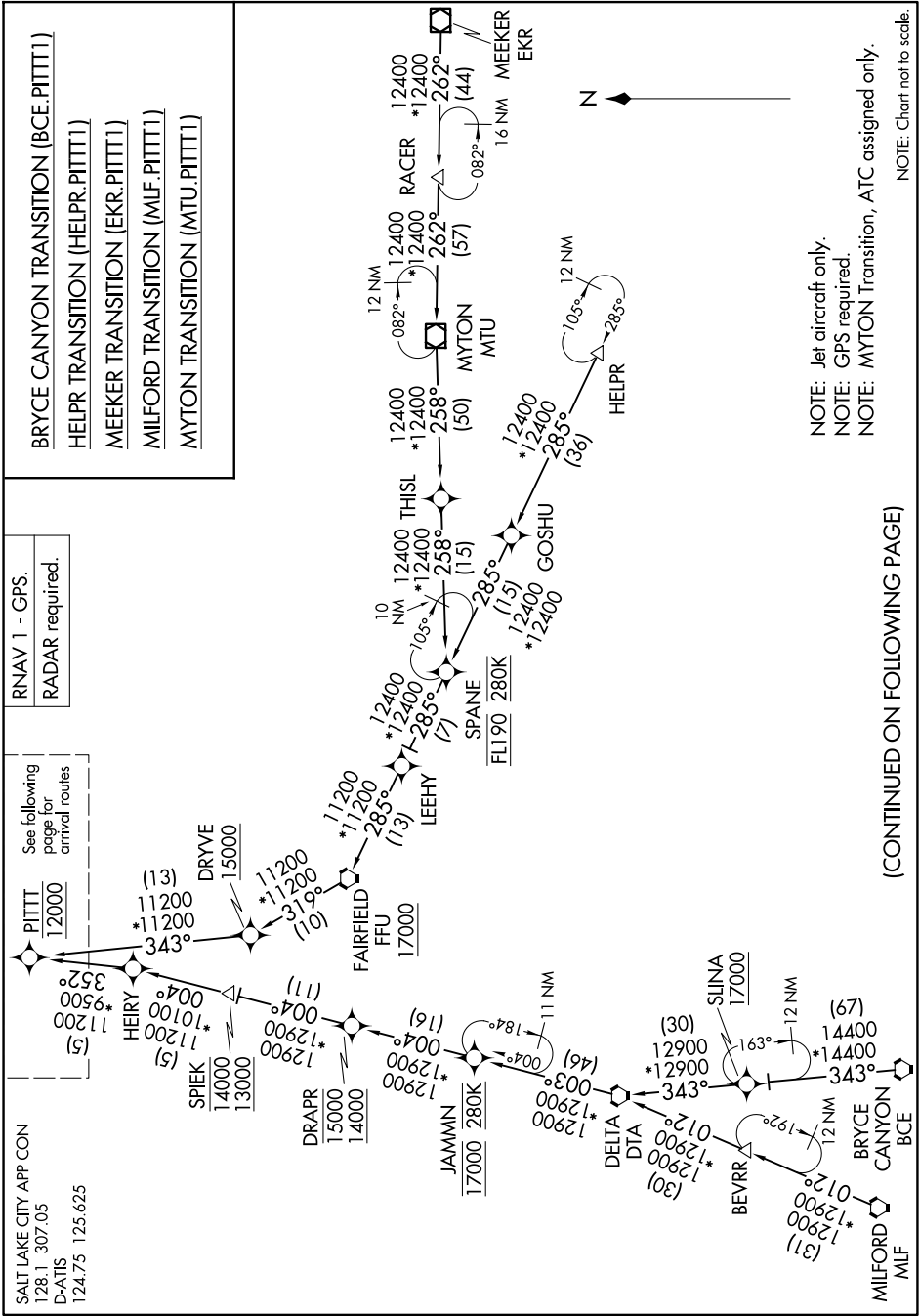


PITTT ONE ARRIVAL (RNAV) Transition Routes

SALT LAKE CITY INTL (SLC)
SALT LAKE CITY, UTAH

AL-365 (FAA)



PITTT ONE ARRIVAL (RNAV) Transition Routes

SALT LAKE CITY, UTAH
SALT LAKE CITY INTL (SLC)

RNAV 1 - GPS.
RADAR required.

SALT LAKE CITY APP CON
128.1 307.05
D-ATIS
124.75 125.625

See following page for arrival routes

- BRYCE CANYON TRANSITION (BCE.PITTT1)
- HELPR TRANSITION (HELPR.PITTT1)
- MEEKER TRANSITION (EKR.PITTT1)
- MILFORD TRANSITION (MLF.PITTT1)
- MYTON TRANSITION (MTU.PITTT1)



NOTE: Jet aircraft only.
NOTE: GPS required.
NOTE: MYTON Transition, ATC assigned only.

(CONTINUED ON FOLLOWING PAGE)

NOTE: Chart not to scale.