

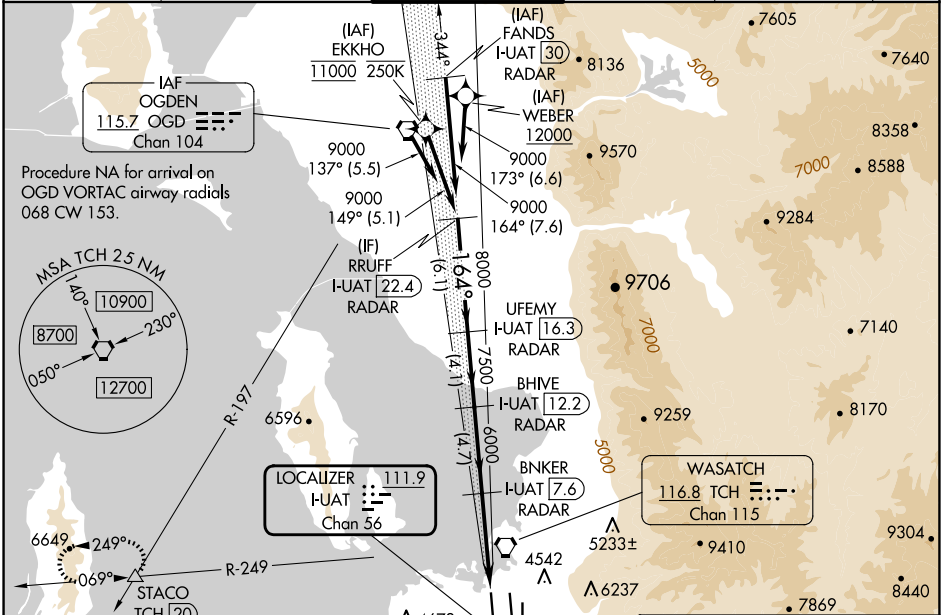
LOC/DME I-UAT 111.9 Chan 56	APP CRS 164°	Rwy ldg 12000 TDZE 4226 Apt Elev 4231
-------------------------------------------------	------------------------	------------------------------------------------------------------

ILS RWY 16R (CAT II & III)

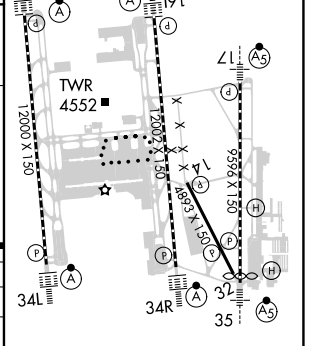
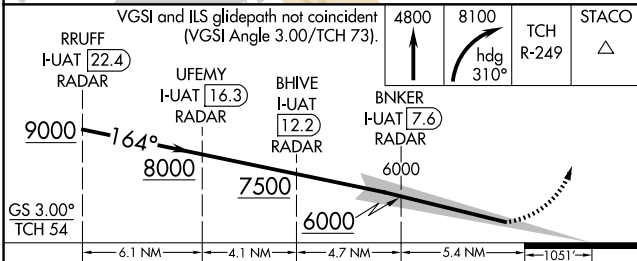
SALT LAKE CITY INTL (SLC)

RNP APCH - GPS. From EKKHO or WEBER. DME or RADAR required.	ALSF-2 	MISSED APPROACH: Climb to 4800 then climbing right turn to 8100 on heading 310° and on TCH VORTAC R-249 to STACO INT/TCH 20 DME and hold.
<p>Simultaneous approach authorized. CAT II: RVR 1000 authorized with specific OPSPEC, MSPEC, or LOA approval and use of autoland or HUD to touchdown.</p>		

D-ATIS 124.75 125.625	SALT LAKE CITY APP CON 125.7 284.6	SALT LAKE CITY TOWER 132.65 336.4	GND CON 123.775 348.6	CLNC DEL 127.3 379.975	CPDLC
---------------------------------	----------------------------------------------	---------------------------------------------	---------------------------------	----------------------------------	-------



ELEV 4231	TDZE 4226
-----------	-----------



CATEGORY	A	B	C	D
S-ILS 16R	CAT II RA 104/12 100 DA 4326			
S-ILS 16R	CAT III RVR 03			

CATEGORY II & III ILS - SPECIAL AIRCREW & AIRCRAFT CERTIFICATION REQUIRED

HIRL all Rwys
TDZ/CL Rwys 16L, 16R, 17, 34L, 34R, and 35

SW-4, 15 MAY 2025 to 12 JUN 2025

SW-4, 15 MAY 2025 to 12 JUN 2025