

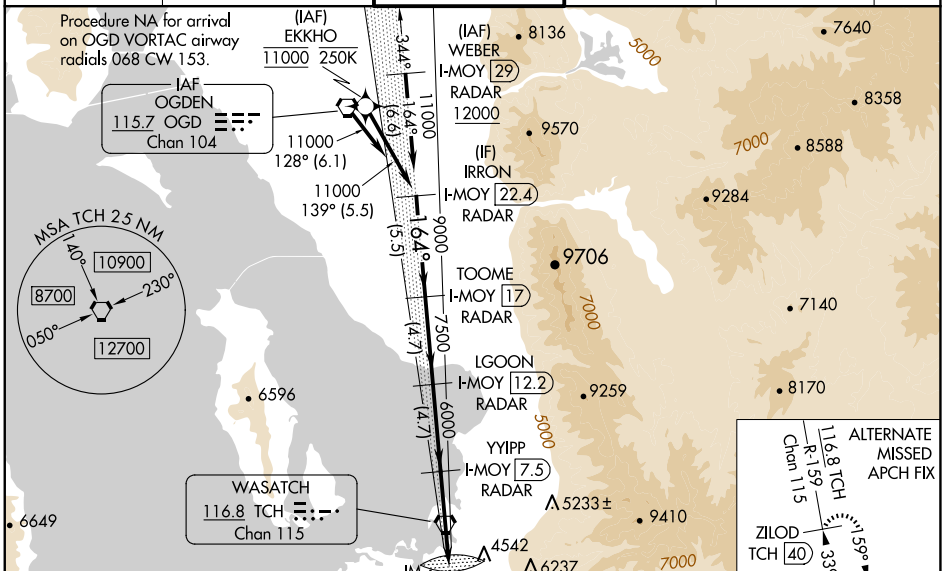
LOC/DME I-MOY 109.5 Chan 32	APP CRS 164°	Rwy Idg 12002 TDZE 4231 Apt Elev 4231
---	------------------------	--

ILS RWY 16L (CAT II & III)

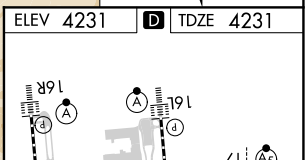
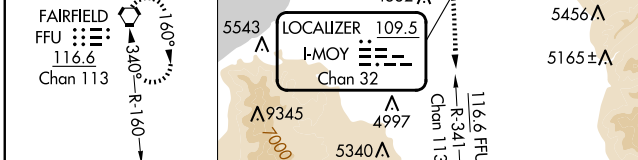
SALT LAKE CITY INTL (SLC)

RNP APCH - GPS. From EKKHO.	ALSF-2 	MISSED APPROACH: Climb to 4800 then climb to 10000 on FFU VORTAC R-341 to FFU VORTAC and hold.
DME or RADAR required.		
<p>Simultaneous approach authorized. CAT II: RVR 1000 authorized with specific OPSPEC, MSPEC, or LOA approval and use of autoland or HUD to touchdown.</p>		

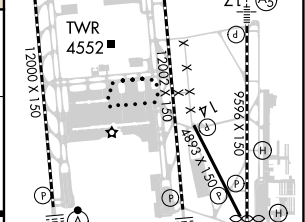
D-ATIS 124.75 125.625	SALT LAKE CITY APP CON 125.7 284.6	SALT LAKE CITY TOWER 119.05 257.8	GND CON 123.775 348.6	CLNC DEL 127.3 379.975	CPDLC
---------------------------------	--	---	---------------------------------	----------------------------------	-------



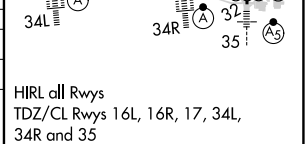
MISSED APCH FIX FAIRFIELD FFU 116.6 Chan 113	ELEV 4231	D TDZE 4231
---	-----------	--------------------



IRRON I-MOY 22.4 RADAR	TOOME I-MOY 17 RADAR	LGOON I-MOY 12.2 RADAR	YYIPP I-MOY 7.5 RADAR	IM	FFU
11000	9000	7500	6000	4331	
GS 3.00° TCH 55					
5.5 NM	4.7 NM	4.7 NM	5.4 NM	1026'	



CATEGORY	A	B	C	D
S-ILS 16L	CAT II RA 109/12 100 DA 4331			
S-ILS 16L	CAT III RVR 03			



CATEGORY II & III ILS - SPECIAL AIRCREW & AIRCRAFT CERTIFICATION REQUIRED