


LOC I-SNS	APP CRS	Rwy Idg	<b>4825</b>
<b>108.5</b>	<b>315°</b>	TDZE	<b>82</b>
		Apt Elev	<b>84</b>

# LOC RWY 31

SALINAS MUNI (SNS)

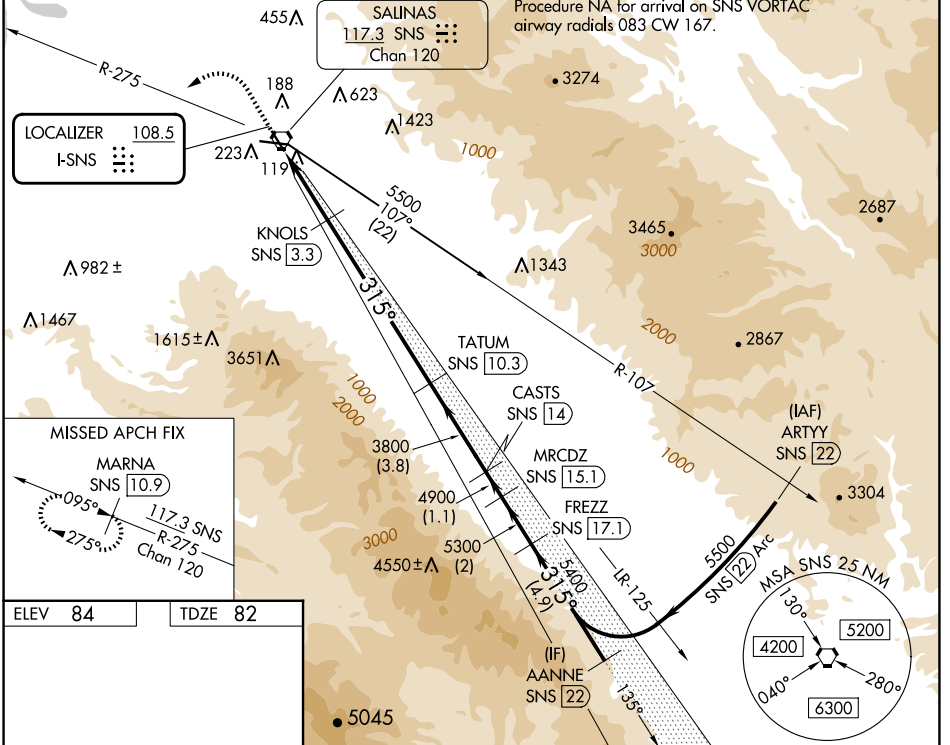
DME required.

▼ DME from SNS VORTAC. DME use requires simultaneous reception of I-SNS and SNS DME. Circling NA for Cats C and D northeast of Rwy 13 and north of Rwy 26. For inop ALS, increase S-LOC-31 visibility Cats C and D to RVR 5000.

MALS R 

MISSED APPROACH: Climb to 800 then climbing left turn to 3000 on SNS VORTAC R-275 to MARNA/SNS 10.9 DME and hold, continue climb-in-hold to 3000.

ATIS	NORCAL APP CON	SALINAS TOWER *	GND CON	UNICOM
<b>124.85</b>	<b>133.0 251.15</b>	<b>119.525 (CTAF) 0 239.3</b>	<b>121.7</b>	<b>123.0</b>



ELEV 84 TDZE 82


MISSED APCH FIX


MARN SNS [10.9]


117.3 SNS R-275 Chan 120

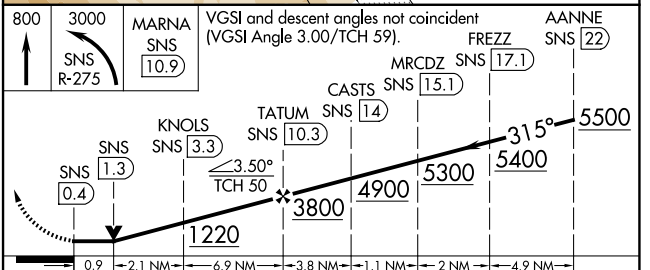
095°

275°

HIRL Rwy 13-31 

MIRL Rwy 8-26 

REIL Rwy 13 and 26 



CATEGORY	A	B	C	D
S-LOC 31	420/24 338 (400-½)		420/40 338 (400-¾)	
CIRCLING	540-1 456 (500-1)		800-2 1740-3 716 (800-2)	1656 (1700-3)

SW-2, 15 MAY 2025 to 12 JUN 2025

SW-2, 15 MAY 2025 to 12 JUN 2025