

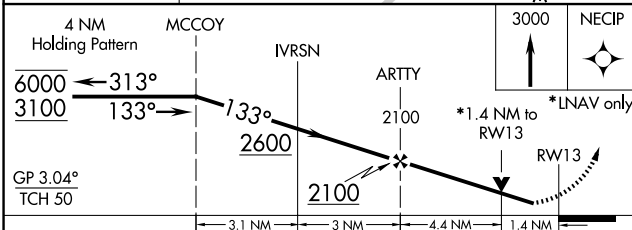
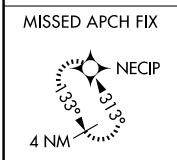
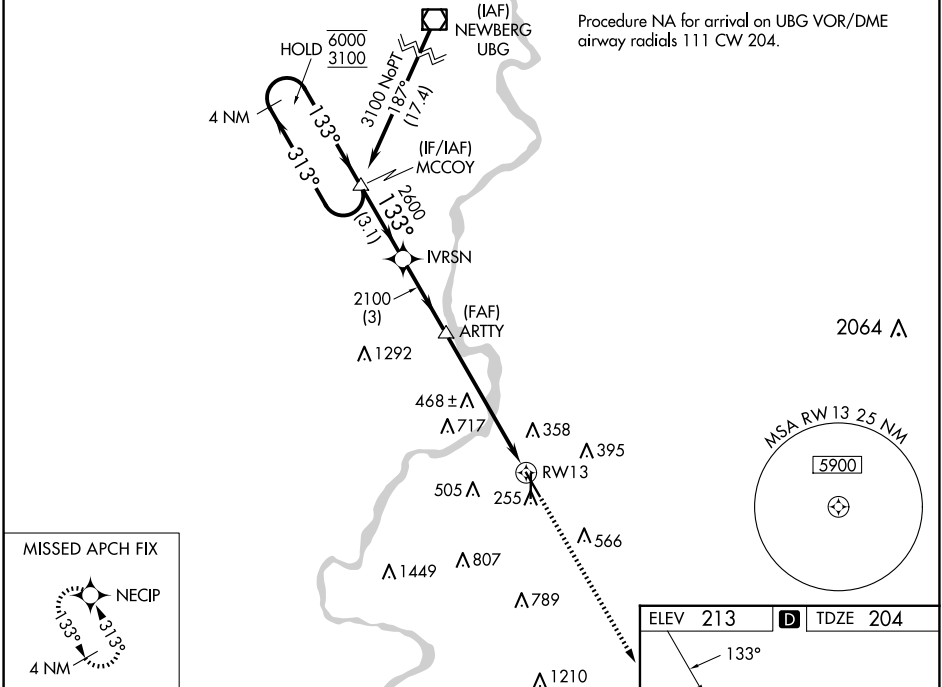
WAAS CH 97642 W13A	APP CRS 133°	Rwy Idg TDZE Apt Elev	5811 204 213
--	------------------------	-----------------------------	---

RNAV (GPS) RWY 13

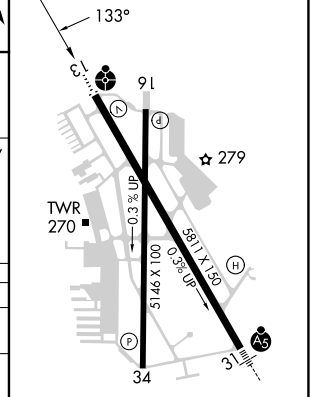
MCNARY FLD (SLE)

RNP APCH.		ODALS	MISSED APPROACH: Climb to 3000 direct NECIP and hold.
<p>▼ Circling Rwy 16, 34 NA at night. Rwy 13 helicopter visibility reduction below $\frac{3}{4}$ SM NA. Inop table does not apply to LNAV/VNAV all Cats. For uncompensated Baro-VNAV systems, LNAV/VNAV NA below -15°C or above 54°C.</p>			

ATIS 124.55	SEATTLE CENTER 125.8 291.7	SALEM TOWER ★ 119.1(CTAF) 257.2	GND CON 121.9	UNICOM 122.95
-----------------------	--------------------------------------	---	-------------------------	-------------------------



ELEV 213	D TDZE 204
----------	-------------------



CATEGORY	A	B	C	D
LPV DA	454- $\frac{3}{4}$ 250 (300- $\frac{3}{4}$)			
LNAV/VNAV DA	580-1 376 (400-1)			
LNAV MDA	700- $\frac{3}{4}$ 496 (500- $\frac{3}{4}$)	700-1 $\frac{1}{4}$ 496 (500-1 $\frac{1}{4}$)		
C CIRCLING	880-1 667 (700-1)	960-1 747 (800-1)	1060-2 $\frac{1}{2}$ 847 (900-2 $\frac{1}{2}$)	1260-3 1047 (1100-3)

REIL Rwy 13, 16 and 34 **Ⓛ**
 HIRL Rwy 13-31 **Ⓛ**
 MIRL Rwy 16-34 **Ⓛ**

NW-1, 15 MAY 2025 to 12 JUN 2025

NW-1, 15 MAY 2025 to 12 JUN 2025