

# TEDDD FIVE DEPARTURE (RNAV)

NC-3, 15 MAY 2025 to 12 JUN 2025

**TOP ALTITUDE:**  
5000

**TAKEOFF MINIMUMS**  
Rwys 6, 24: Standard with minimum climb of 500' per NM to 1120 then minimum climb of 280' per NM to 5000.

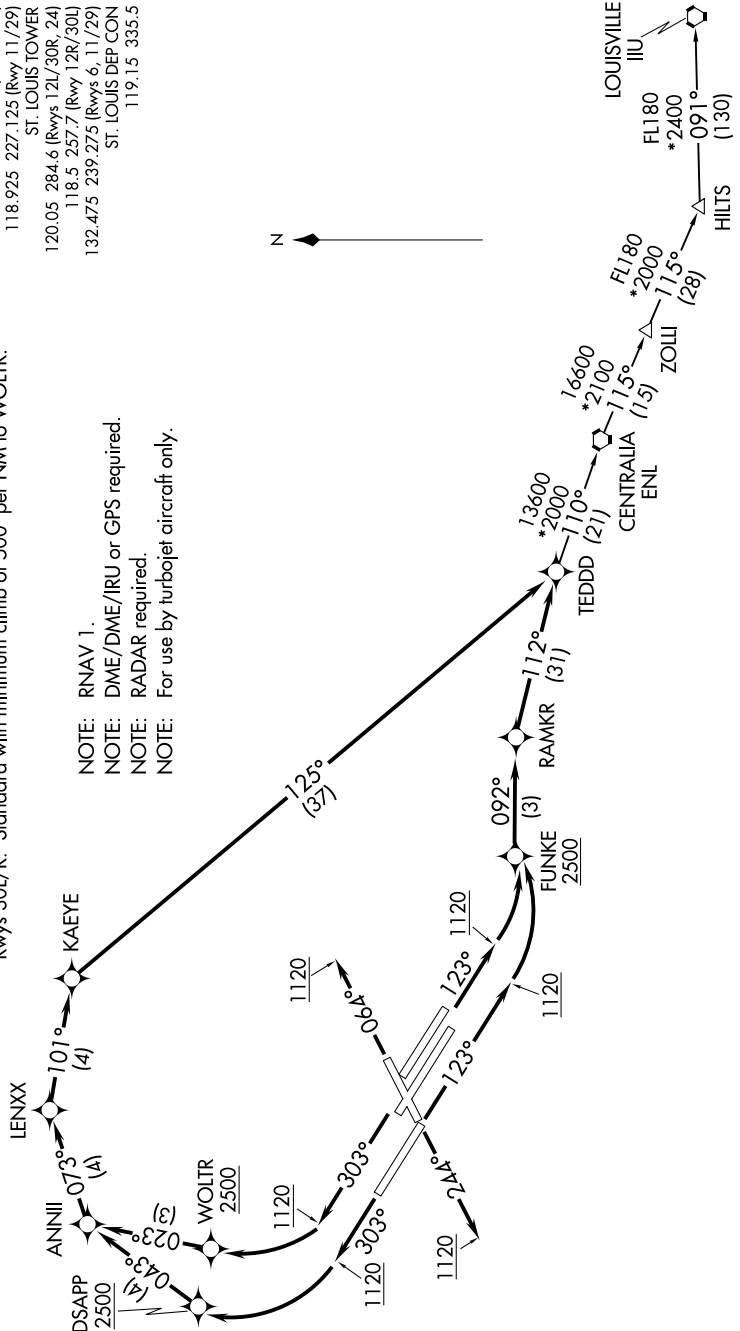
Rwys 11, 12L/R: Standard with minimum climb of 500' per NM to FUNKE.

Rwy 29: Standard with minimum climb of 500' per NM to DSAPP.

Rwys 30L/R: Standard with minimum climb of 500' per NM to WOLTR.

- D-AIIS 125.025 379.925
- CUNC DEL 119.5 363.1
- CPDIC
- GND CON 121.9 348.6 (Inbound)
- 121.65 377.175 (Outbound)
- 118.925 227.125 (Rwy 11/29)
- ST. LOUIS TOWER 120.05 284.6 (Rwys 12L/30R, 24)
- 118.5 257.7 (Rwy 12R/30L)
- 132.475 239.275 (Rwys 6, 11/29)
- ST. LOUIS DEP CON 119.15 335.5

- NOTE: RNAV 1.
- NOTE: DME/DME/IRU or GPS required.
- NOTE: RADAR required.
- NOTE: For use by turbojet aircraft only.



(NARRATIVE ON FOLLOWING PAGE)

NOTE: Chart not to scale.

NC-3, 15 MAY 2025 to 12 JUN 2025

# TEDDD FIVE DEPARTURE (RNAV)