

RNAV (RNP) Z RWY 30R

ST LOUIS LAMBERT INTL (STL)

APP CRS	Rwy Idg	9013
303°	TDZE	605
	Apt Elev	618

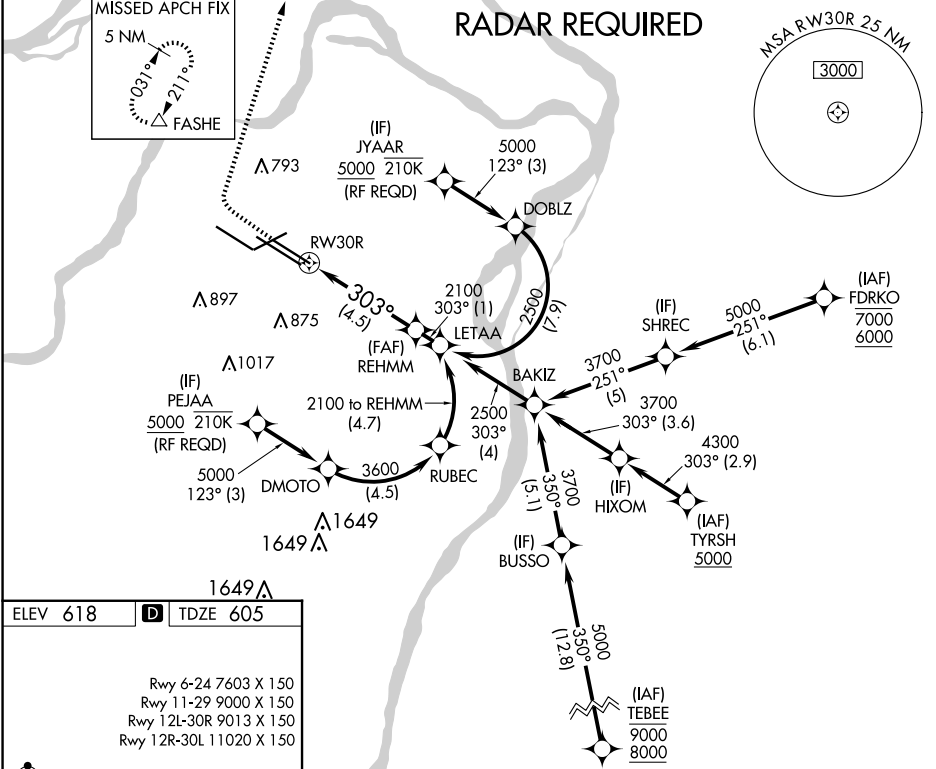
▼ For uncompensated Baro-VNAV systems, procedure NA below -16°C (4°F) or above 54°C (130°F). GPS required. Simultaneous approach authorized with Rwy 29, except for arrivals at JYAAR and PEJAA. Use of FD or AP required during simultaneous operations. For inop ALS, increase RNP 0.30 all Cats visibility to RVR 6000.

ALSF-2



MISSED APPROACH: Climb to 1100 then climbing right turn to 3000 direct FASHE and hold.

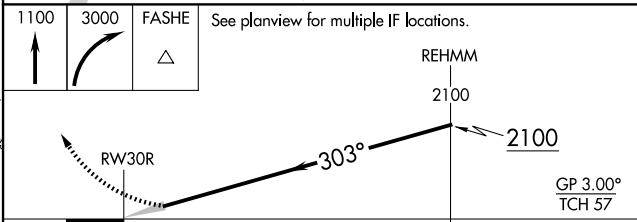
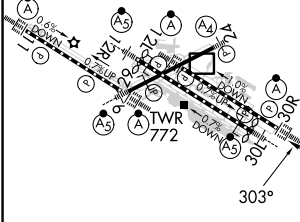
D-ATIS 125.025 379.925	ST. LOUIS APP CON 132.125 360.6	ST. LOUIS TOWER 120.05 284.6	GND CON 121.9 348.6 (Inbound) 121.65 377.175 (Outbound) 118.925 227.125 (Rwy 11/29)	CLNC DEL 119.5 363.1	CPDLC
--	---	--	---	--------------------------------	-------



NC-3, 15 MAY 2025 to 12 JUN 2025

NC-3, 15 MAY 2025 to 12 JUN 2025

ELEV 618	D	TDZE 605
Rwy 6-24 7603 X 150		
Rwy 11-29 9000 X 150		
Rwy 12L-30R 9013 X 150		
Rwy 12R-30L 11020 X 150		



CATEGORY	A	B	C	D
RNP 0.30 DA		969/40	364 (400-¾)	

HIRL all Rwys
TDZ/CL Rwys 11, 12L, 12R, 29, and 30R

AUTHORIZATION REQUIRED