

APP CRS Rwy Idg **10679**
 303° TDZE **583**
 Apt Elev **617**

RNAV (RNP) Z RWY 30L

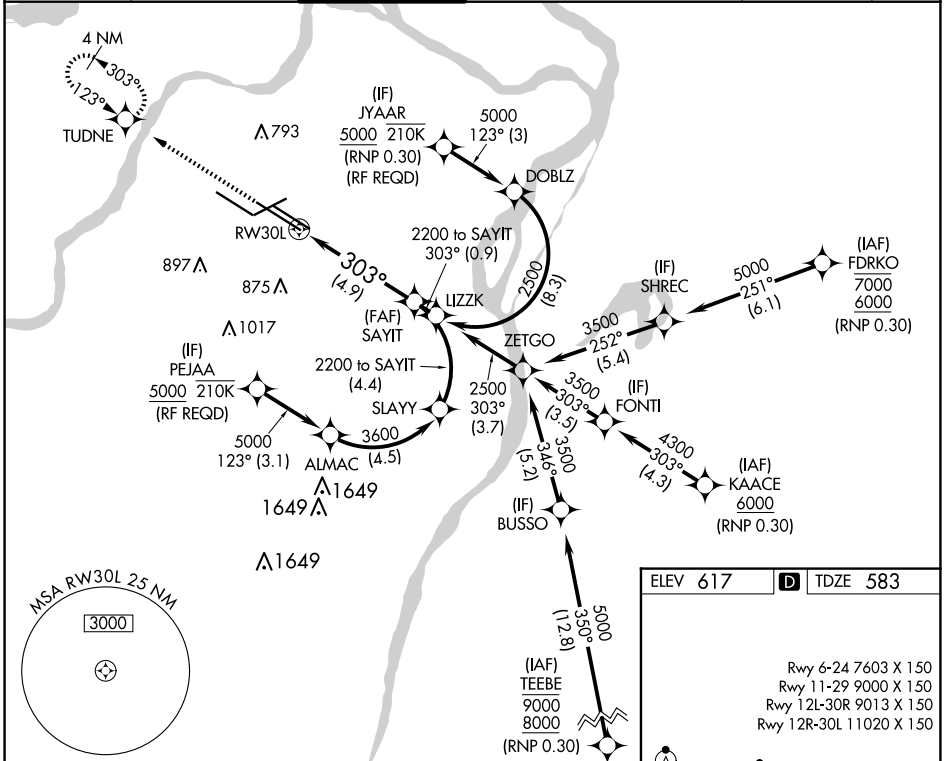
ST LOUIS LAMBERT INTL (STL)

RNP AR APCH - GPS. Authorization required.
 From FRDKO, JYAAR, KAACE, or TEEBE, min RNP 0.30. From PEJAA or JYAAR: RF.
 Use of FD or AP required during simultaneous operations. Simultaneous approach authorized with Rwy 29, except for arrivals at JYAAR and PEJAA. For uncompensated Baro-VNAV systems, procedure NA below -18°C or above 54°C. For inop ALS, increase RNP 0.30 all Cats visibility to RVR 6000.

MALSR

 MISSED APPROACH: Climb to 3000 direct TUDNE and hold, continue climb-in-hold to 3000.

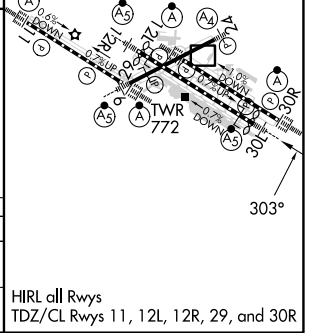
D-ATIS 125.025 379.925	ST. LOUIS APP CON 132.125 360.6	ST. LOUIS TOWER 118.5 257.7	GND CON 121.9 348.6 (Inbound) 121.65 377.175 (Outbound) 118.925 227.125 (Rwy 11/29)	CLNC DEL 119.5 363.1	CPDLC
--	---	---------------------------------------	---	--------------------------------	-------



NC-3, 15 MAY 2025 to 12 JUN 2025

NC-3, 15 MAY 2025 to 12 JUN 2025

3000 ↑ TUDNE	See planview for multiple IF locations.	SAYIT 2200		
		2200 GP 3.00° TCH 58		
CATEGORY	A	B	C	D
RNP 0.30 DA	998/40 415 (400-3/4)			
AUTHORIZATION REQUIRED				



HIRL all Rwys
 TDZ/CL Rwys 11, 12L, 12R, 29, and 30R