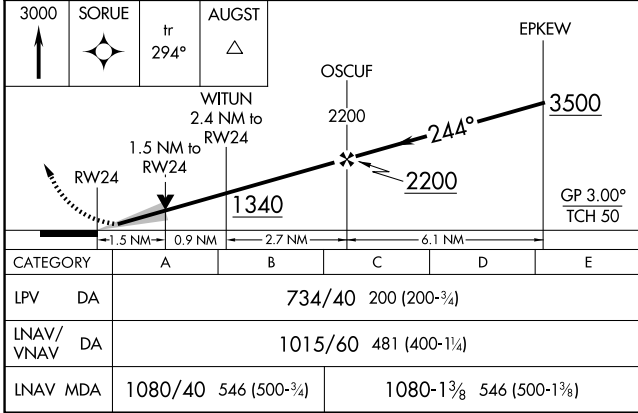
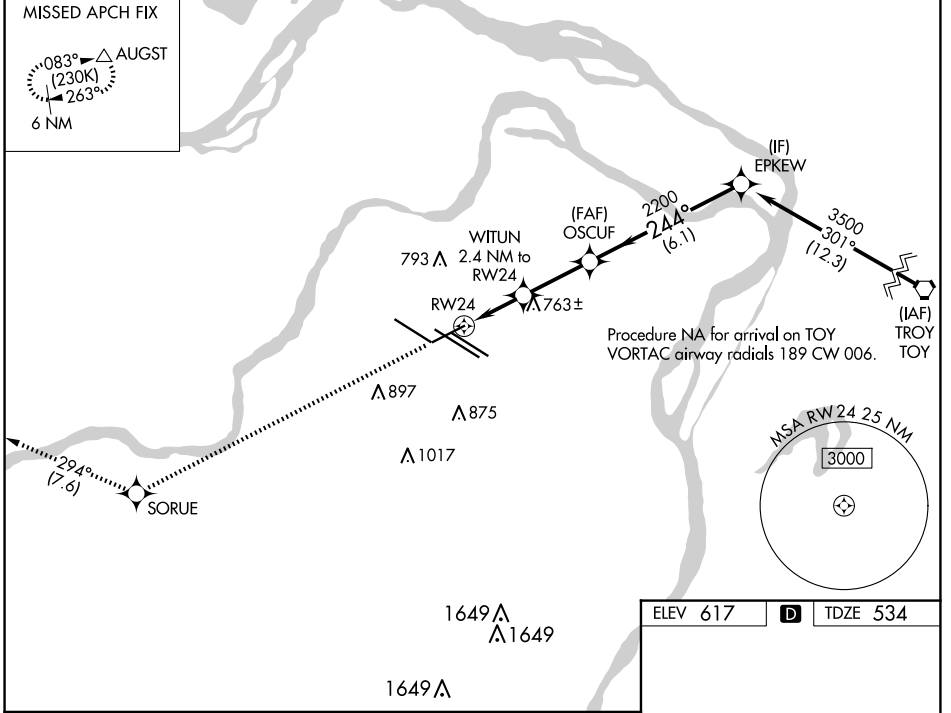


WAAS CH 87021 W24A	APP CRS 244°	Rwy Idg TDZE Apt Elev	7603 534 617
--	------------------------	-----------------------------	---

RNAV (GPS) RWY 24

ST LOUIS LAMBERT INTL (STL)

RNP APCH - GPS.		MALSS		MISSED APPROACH: Climb to 3000 direct SORUE and on track 294° to AUGST and hold.	
▼ For uncompensated Baro-VNAV systems, LNAV/VNAV NA below -16°C or above 54°C. Inop table does not apply to LPV. For inop ALS, increase LNAV/VNAV Cat E visibility to 1 3/8 SM and LNAV Cat E visibility to 1 3/8 SM.		MALS			
D-ATIS 125.025 379.925	ST. LOUIS APP CON 132.125 360.6	ST. LOUIS TOWER 120.05 284.6	GND CON 121.9 348.6 (Inbound) 121.65 377.175 (Outbound) 118.925 227.125 (Rwy 11/29)		CLNC DEL 119.5 363.1
			CPDLC		



ELEV 617	D	TDZE 534
----------	----------	----------

Rwy 6-24 7603 X 150
Rwy 11-29 9000 X 150
Rwy 12L-30R 9013 X 150
Rwy 12R-30L 11020 X 150

HIRL all Rwys
TDZ/CL Rwys 11, 12L, 12R, 29, and 30R

NC-3, 15 MAY 2025 to 12 JUN 2025

NC-3, 15 MAY 2025 to 12 JUN 2025