

STJ VORTAC 115.5 Chan 102	APP CRS 348°	Rwy Idg TDZE Apt Elev	8061 815 827
---	------------------------	-----------------------------	---

VOR or TACAN RWY 35

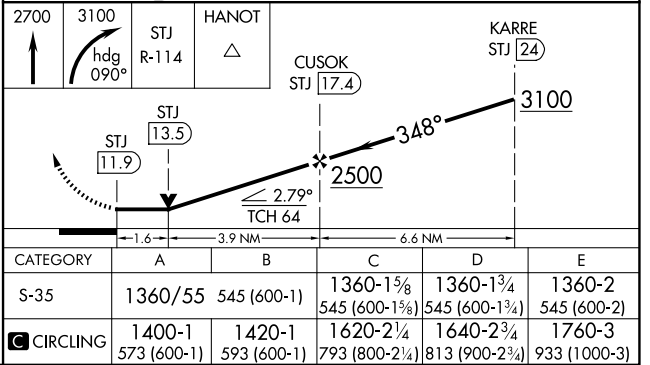
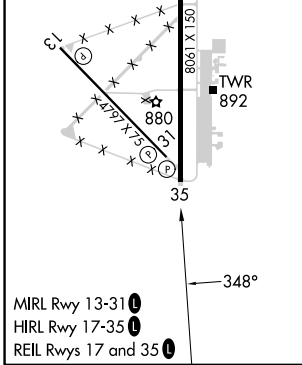
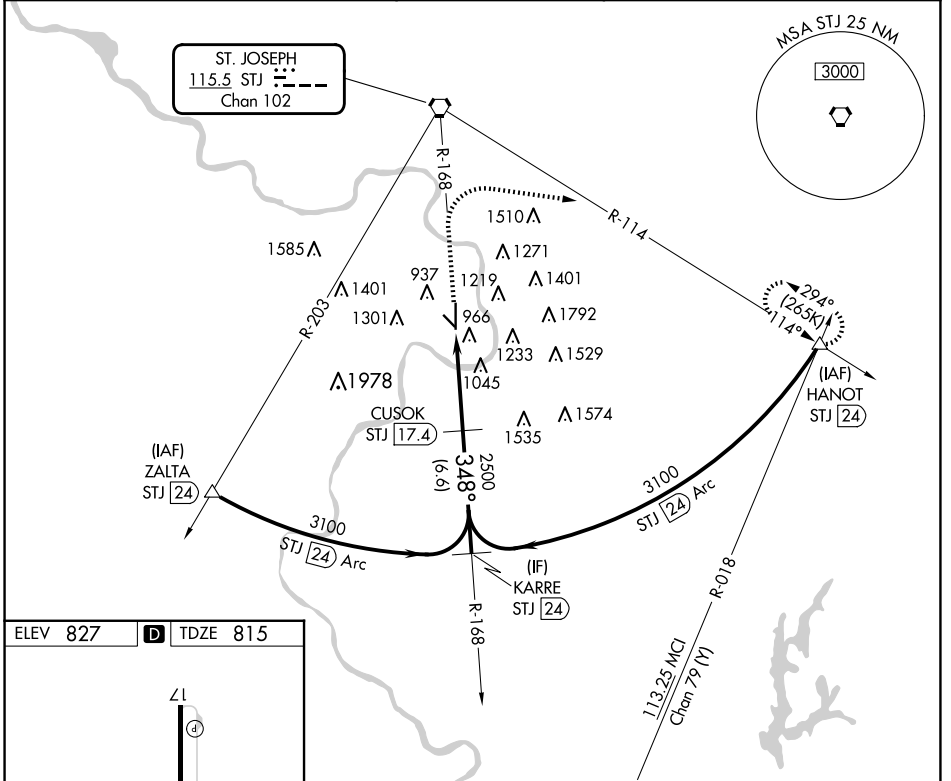
ROSECRANS MEML (STJ)

DME required.

▽
▲
ASR/PAR

MISSED APPROACH: Climb to 2700 then climbing right turn to 3100 on heading 090° and STJ VORTAC R-114 to HANOT/24 DME and hold.

ATIS 125.05	ST. JOSEPH APP CON * 120.35 360.8	ST. JOSEPH TOWER * 126.9 (CTAF) 239.0	GND CON 121.9	UNICOM 122.95
-----------------------	---	---	-------------------------	-------------------------



NC-3, 15 MAY 2025 to 12 JUN 2025

NC-3, 15 MAY 2025 to 12 JUN 2025