

ROYAL TWO DEPARTURE

AL-359 (FAA)

ROSECRANS MEML (STJ)
ST. JOSEPH, MISSOURI

NC-3, 15 MAY 2025 to 12 JUN 2025

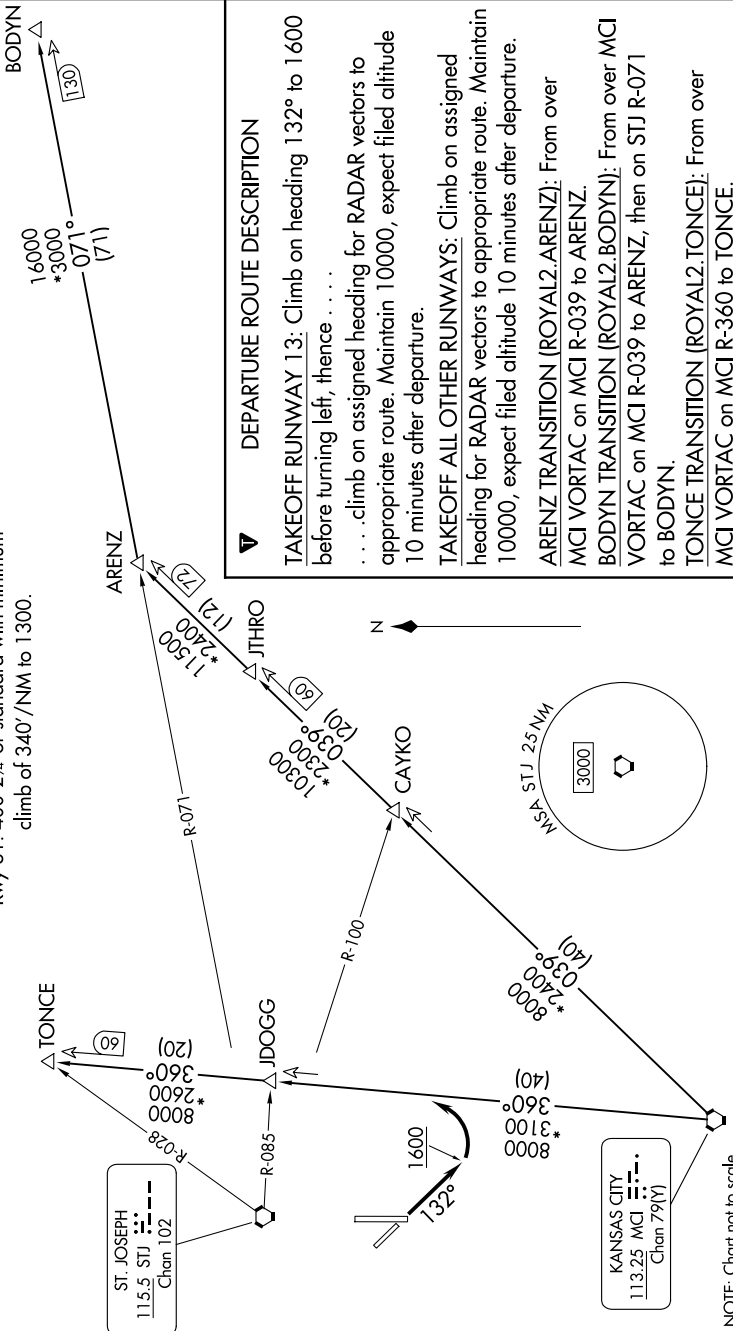
ST. JOSEPH DEP CON*
120.35 360.8
ATIS
125.05

RADAR and DME required.

TOP ALTITUDE:
10000

TAKEOFF MINIMUMS

Rwys 13, 17, 35: Standard.
Rwy 31: 400-2¼ or standard with minimum
climb of 340'/NM to 1300.



DEPARTURE ROUTE DESCRIPTION

TAKEOFF RUNWAY 13: Climb on heading 132° to 1600 before turning left, thence
 climb on assigned heading for RADAR vectors to appropriate route. Maintain 10000, expect filed altitude 10 minutes after departure.

TAKEOFF ALL OTHER RUNWAYS: Climb on assigned heading for RADAR vectors to appropriate route. Maintain 10000, expect filed altitude 10 minutes after departure.

ARENZ TRANSITION (ROYAL2.ARENZ): From over MCI VORTAC on MCI R-039 to ARENZ.
BODYN TRANSITION (ROYAL2.BODYN): From over MCI VORTAC on MCI R-039 to ARENZ, then on STJ R-071 to BODYN.
TONCE TRANSITION (ROYAL2.TONCE): From over MCI VORTAC on MCI R-360 to TONCE.

NOTE: Chart not to scale.

NC-3, 15 MAY 2025 to 12 JUN 2025