

# RACER EIGHT DEPARTURE

AL-359 (FAA)

ST. JOSEPH DEP CON \*  
120.35 360.8  
ATIS  
125.05

ST. JOSEPH  
115.5 STJ  
Chan 102

RADAR required.

**TOP ALTITUDE:  
10000**

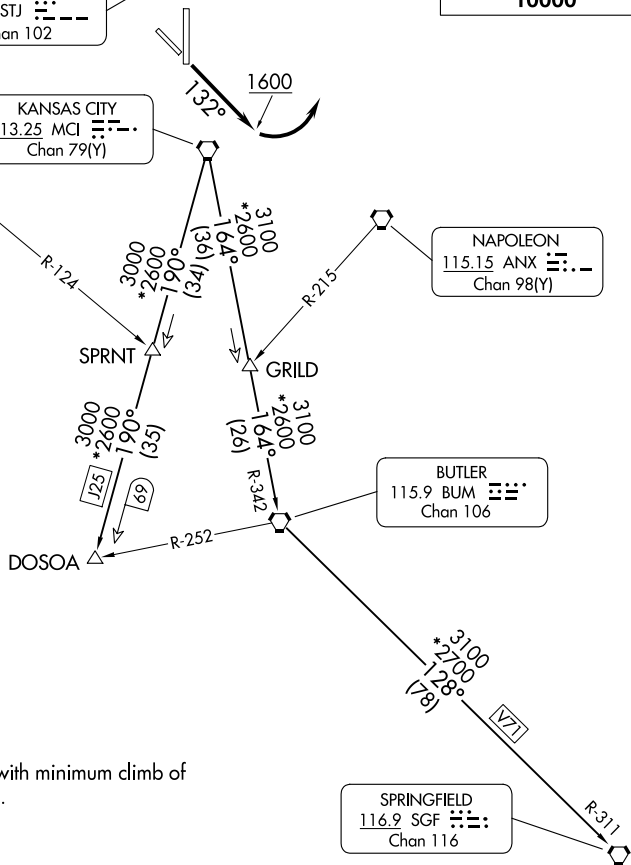
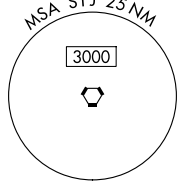
KANSAS CITY  
113.25 MCI  
Chan 79(Y)

TOPEKA  
117.8 TOP  
Chan 125

NAPOLEON  
115.15 ANX  
Chan 98(Y)

BUTLER  
115.9 BUM  
Chan 106

SPRINGFIELD  
116.9 SGF  
Chan 116



### TAKEOFF MINIMUMS

Rwys 13, 17, 35: Standard.  
Rwy 31, 400-2¼ or standard with minimum climb of 340' per NM to 1300.

NOTE: Chart not to scale.

### DEPARTURE ROUTE DESCRIPTION

**TAKEOFF RUNWAY 13:** Climb on heading 132° to 1600 before turning left, thence . . . .climb on assigned heading for RADAR vectors to appropriate route. Maintain 10000 or as assigned by ATC, expect filed altitude 10 minutes after departure.

**TAKEOFF ALL OTHER RUNWAYS:** Climb on assigned heading for RADAR vectors to appropriate route. Maintain 10000 or as assigned by ATC, expect filed altitude 10 minutes after departure.

**BUTLER TRANSITION (RACER8.BUM):** From over MCI VORTAC on MCI R-164 and BUM R-342 to BUM VORTAC.

**DOSOA TRANSITION (RACER8.DOSOA):** From over MCI VORTAC on MCI R-190 to DOSOA.

**SPRINGFIELD TRANSITION (RACER8.SGF):** From over MCI VORTAC on MCI R-164 and BUM R-342 to BUM VORTAC, then on BUM R-128 and SGF R-311 to SGF VORTAC.

# RACER EIGHT DEPARTURE

NC-3, 15 MAY 2025 to 12 JUN 2025

NC-3, 15 MAY 2025 to 12 JUN 2025