

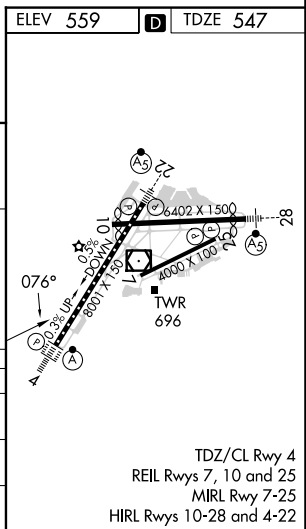
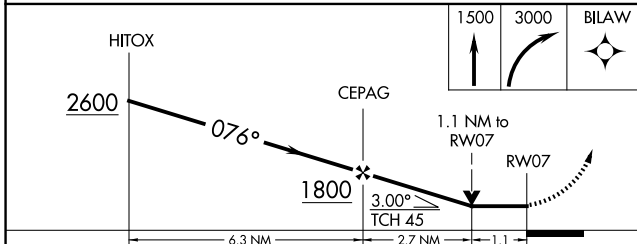
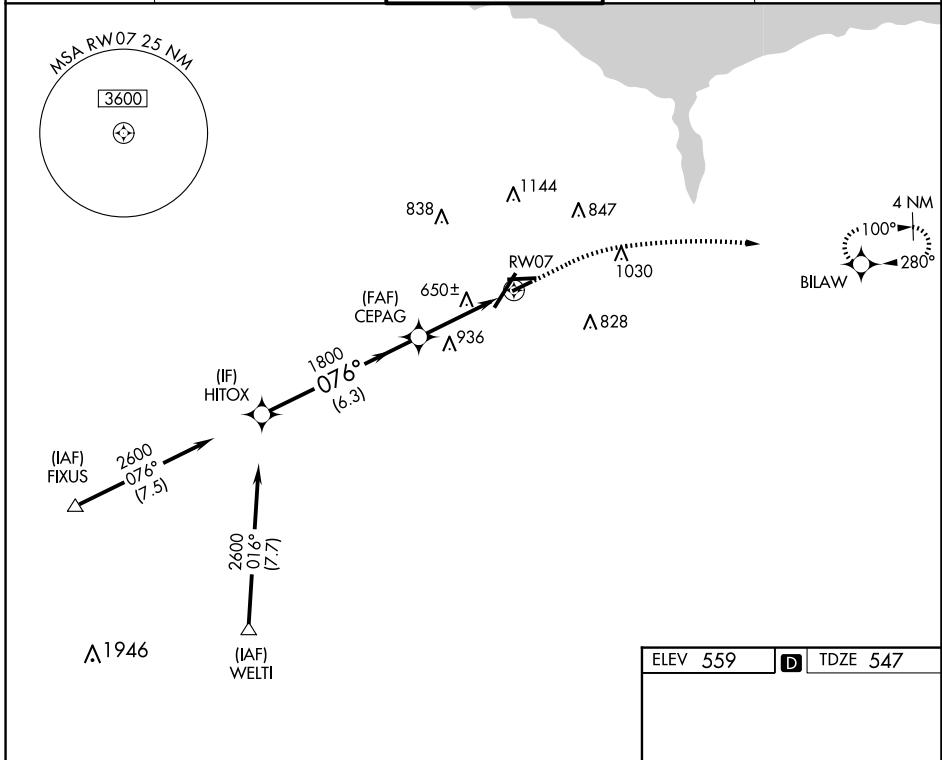
WAAS CH 61334 W07A	APP CRS 076°	Rwy Idg TDZE Apt Elev	4000 547 559
--	------------------------	-----------------------------	---

RNAV (GPS) RWY 7

FREDERICK DOUGLASS/GREATER ROCHESTER INTL (ROC)

RNP APCH - GPS.	MISSED APPROACH: Climb to 1500 then climbing right turn to 3000 direct BILAW and hold.
▼ ▲ Rwy 7 helicopter visibility reduction below 3/4 SM NA.	

ATIS 124.825	ROCHESTER APP CON 119.55 269.6	ROCHESTER TOWER 118.3 254.3	GND CON 121.7	CLNC DEL 118.8 343.65
------------------------	--	---------------------------------------	-------------------------	---------------------------------



NE-2, 15 MAY 2025 to 12 JUN 2025

NE-2, 15 MAY 2025 to 12 JUN 2025

CATEGORY	A	B	C	D
LP MDA	940-1	393 (400-1)	940-1 1/8	393 (400-1 1/8)
LNAV MDA	1060-1	513 (600-1)	1060-1 3/8	513 (600-1 3/8)
C CIRCLING	1060-1	501 (600-1)	1500-2 3/4 941 (1000-2 3/4)	1500-3 941 (1000-3)