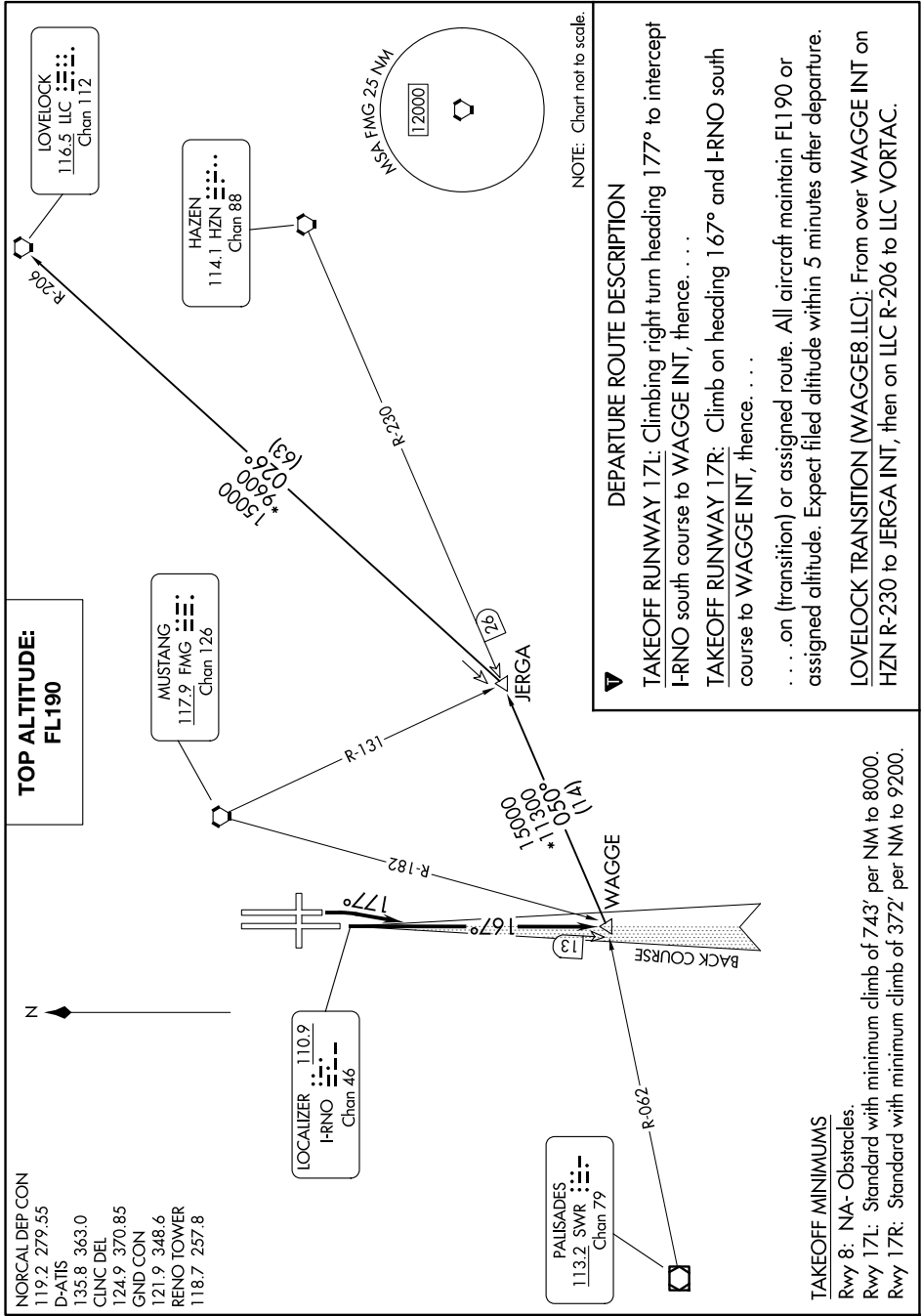


WAGGE EIGHT DEPARTURE

AL-346 (FAA)

RENO/TAHOE INTL (RNO)
RENO, NEVADA

SW-4, 15 MAY 2025 to 12 JUN 2025



SW-4, 15 MAY 2025 to 12 JUN 2025

TAKEOFF MINIMUMS

Rwy 8: NA- Obstacles.
Rwy 17L: Standard with minimum climb of 743' per NM to 8000.
Rwy 17R: Standard with minimum climb of 372' per NM to 9200.