

VORTAC FMG 117.9 Chan 126	APP CRS 239°	Rwy Idg TDZE Apt Elev N/A N/A 4415
---	------------------------	--

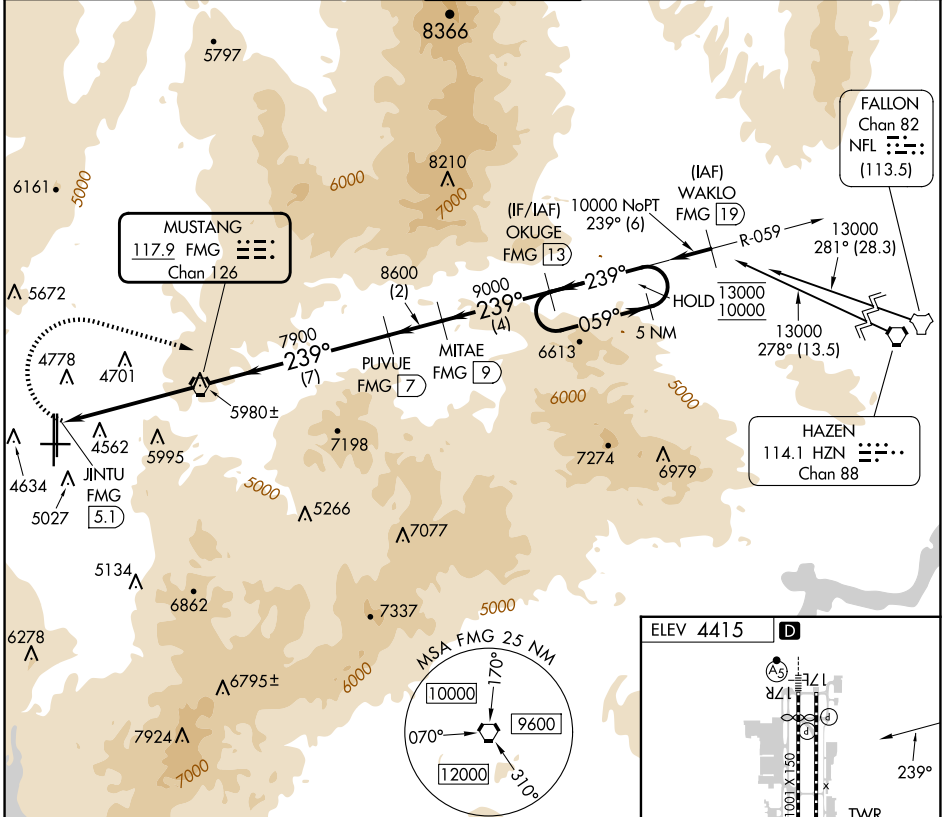
TACAN-F

RENO/TAHOE INTL (RNO)

⚠ Circling NA for Cat E south of Rwy 8 and west of 35L. Circling Rwy 8 NA at night. Approaches RADAR monitored by NORCAL APP CON. Arrivals from east and aircraft on missed approach may be vectored to final. Circling NA for Cat E to Rwsy 8 and 26.

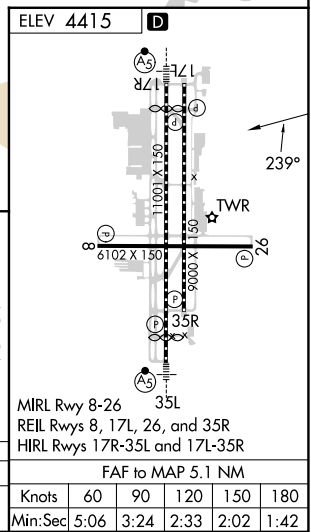
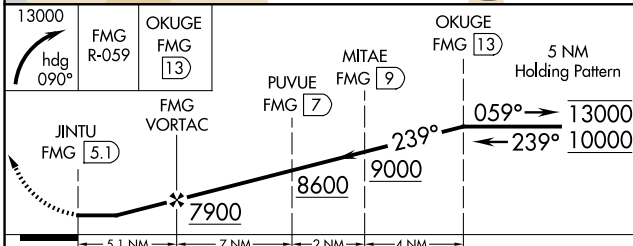
MISSED APPROACH: Climbing right turn to 13000 on heading 090° and FMG R-059 to OKUGE/13 DME and hold, continue climb-in-hold to 13000.

D-ATIS 135.8 363.0	NORCAL APP CON 119.2 279.55 126.3 353.9	RENO TOWER 118.7 257.8	GND CON 121.9 348.6	CLNC DEL 124.9 370.85	CPDLC
------------------------------	---	----------------------------------	-------------------------------	---------------------------------	-------



SW-4, 15 MAY 2025 to 12 JUN 2025

SW-4, 15 MAY 2025 to 12 JUN 2025



CATEGORY	A	B	C	D	E
CIRCLING	6220-1¼ 1805 (1900-1¼)	6220-1½ 1805 (1900-1½)	6460-3	2045	2100-3
FAF to MAP 5.1 NM					
Knots	60	90	120	150	180
Min:Sec	5:06	3:24	2:33	2:02	1:42