

(SCOLA.SCOLA1) 22307

SCOLA ONE ARRIVAL (RNAV)

AL-346 (FAA)

RENO/TAHOE INTL (RNO)

RENO, NEVADA

RNAV 1 - GPS

RADAR required

NORCAL APP CON

119.2 279.55

D-ATIS

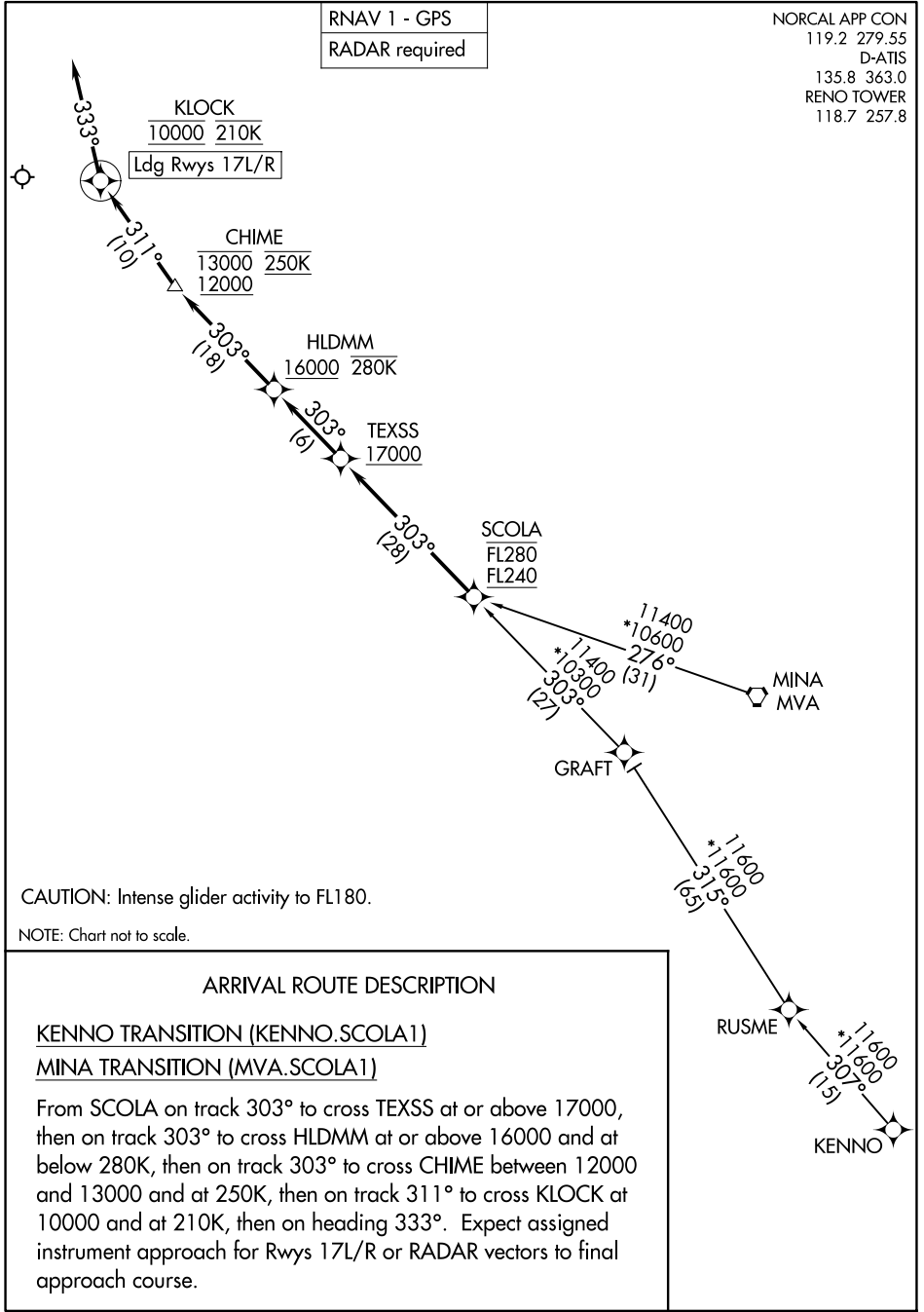
135.8 363.0

RENO TOWER

118.7 257.8

SW-4, 15 MAY 2025 to 12 JUN 2025

SW-4, 15 MAY 2025 to 12 JUN 2025



CAUTION: Intense glider activity to FL180.

NOTE: Chart not to scale.

ARRIVAL ROUTE DESCRIPTION

KENNO TRANSITION (KENNO.SCOLA1)

MINA TRANSITION (MVA.SCOLA1)

From SCOLA on track 303° to cross TEXSS at or above 17000, then on track 303° to cross HLDMM at or above 16000 and at below 280K, then on track 303° to cross CHIME between 12000 and 13000 and at 250K, then on track 311° to cross KLOCK at 10000 and at 210K, then on heading 333°. Expect assigned instrument approach for Rwy 17L/R or RADAR vectors to final approach course.

SCOLA ONE ARRIVAL (RNAV)

(SCOLA.SCOLA1) 03NOV22

RENO, NEVADA

RENO/TAHOE INTL (RNO)