

WAAS CH <b>40409</b> <b>W35B</b>	APP CRS <b>347°</b>	Rwy Idg TDZE Apt Elev	<b>9000</b> <b>4408</b> <b>4415</b>
--	------------------------	-----------------------------	---

# RNAV (GPS) Y RWY 35R

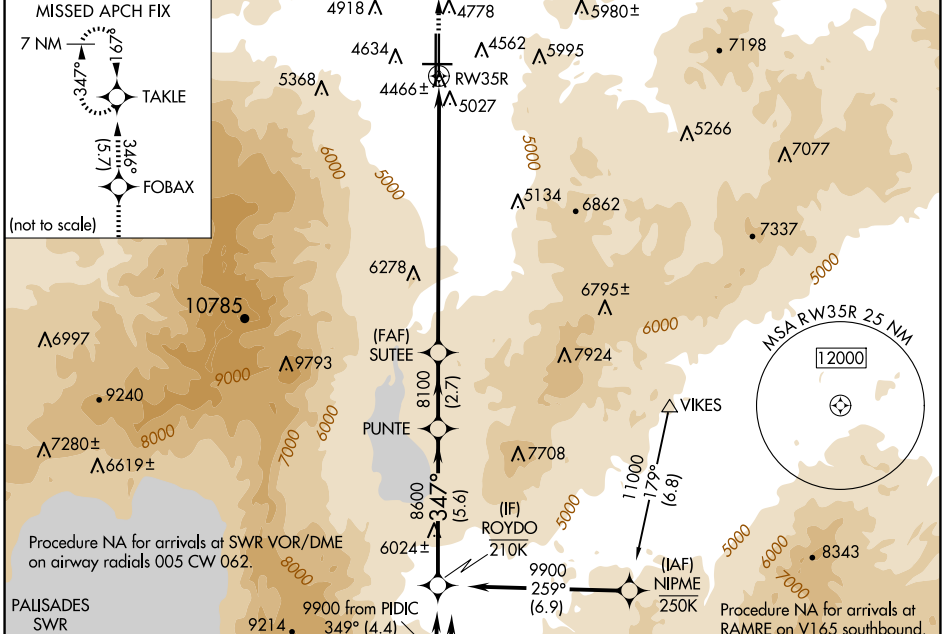
RENO/TAHOE INTL (RNO)

RNP APCH - GPS.

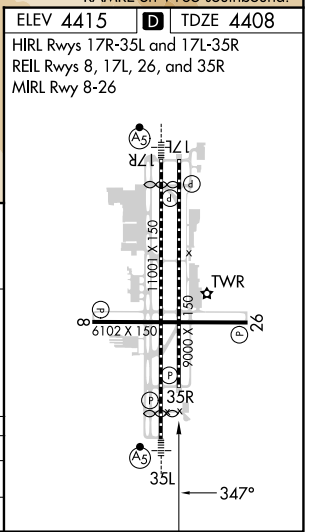
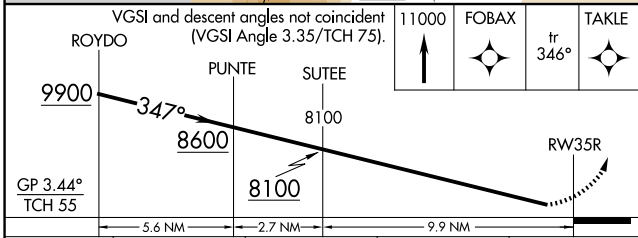
NA Rwy 35R helicopter visibility reduction below 1/4 SM NA.

MISSED APPROACH: Climb to 11000 direct FOBAX and on track 346° to TAKLE and hold, continue climb-in-hold to 11000.  
\*Missed approach requires minimum climb of 250 feet per NM to 6100.

D-ATIS <b>135.8 363.0</b>	NORCAL APP CON <b>119.2 279.55 126.3 353.9</b>	RENO TOWER <b>118.7 257.8</b>	GND CON <b>121.9 348.6</b>	CLNC DEL <b>124.9 370.85</b>	CPDLC
------------------------------	---	----------------------------------	-------------------------------	---------------------------------	-------



ELEV 4415	TDZE 4408
HIRL Rws 17R-35L and 17L-35R	
REIL Rws 8, 17L, 26, and 35R	
MIRL Rwy 8-26	



CATEGORY	A	B	C	D
LPV DA*		4780-1	372 (400-1)	
LPV DA		5379-3	971 (1000-3)	

SW-4, 15 MAY 2025 to 12 JUN 2025

SW-4, 15 MAY 2025 to 12 JUN 2025