

WAAS CH 72909 W17A	APP CRS 167°	Rwy Idg TDZE Apt Elev	9000 4415 4415
--	------------------------	-----------------------------	---

RNAV (GPS) X RWY 17L

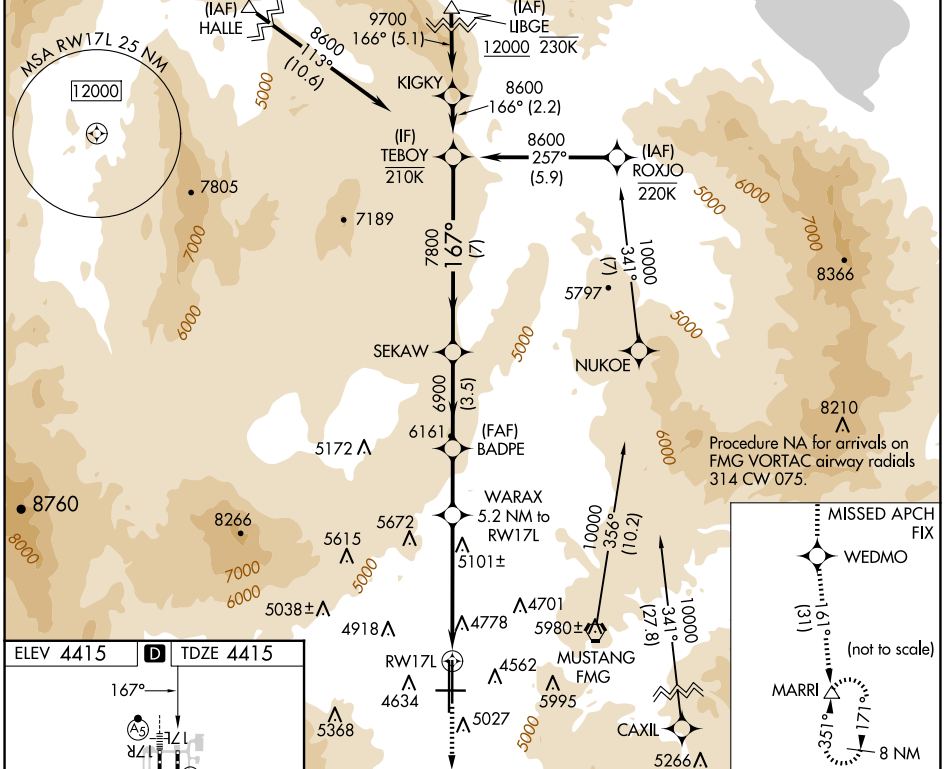
RENO/TAHOE INTL (RNO)

RNP APCH - GPS.

⚠ Circling Rwy 8 NA at night. Rwy 17L helicopter visibility reduction below ¼ SM NA. For uncompensated Baro-VNAV systems, LNAV/VNAV NA below -13°C or above 54°C.

MISSED APPROACH: Climb to 13000 direct WEDMO and on track 161° to MARRI and hold.

D-ATIS 135.8 363.0	NORCAL APP CON 119.2 279.55 126.3 353.9	RENO TOWER 118.7 257.8	GND CON 121.9 348.6	CLNC DEL 124.9 370.85	CPDLC
------------------------------	---	----------------------------------	-------------------------------	---------------------------------	-------



ELEV 4415	D	TDZE 4415
-----------	----------	-----------

