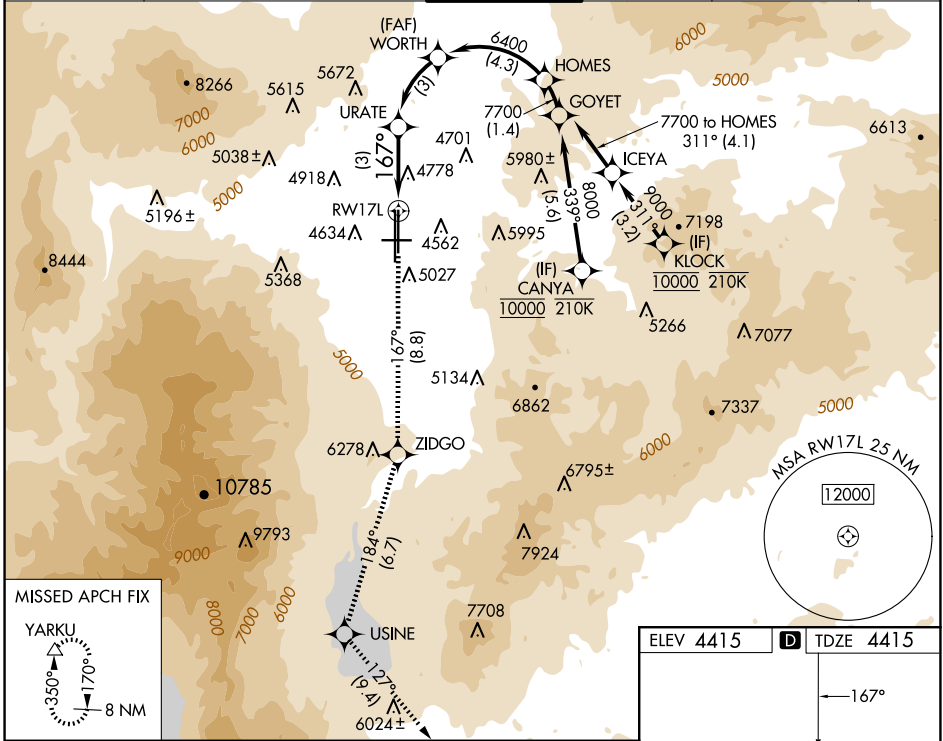


# RNAV (RNP) Y RWY 17L RENO/TAHOE INTL (RNO)

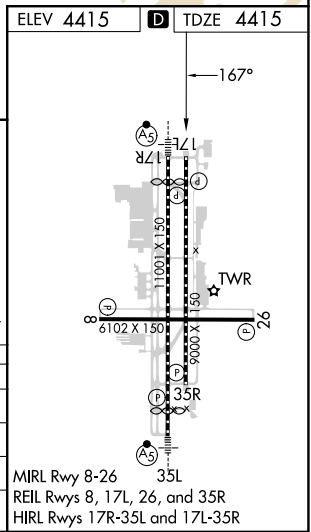
APP CRS	Rwy Idg	<b>9000</b>
<b>167°</b>	TDZE	<b>4415</b>
	Apt Elev	<b>4415</b>

RNP AR APCH - GPS.		MISSED APPROACH: Climb to 13000 on track 167° to ZIDGO and on track 184° to USINE and on track 127° to YARKU and hold, continue climb-in-hold to 13000. * Missed approach requires minimum climb of 252 feet per NM to 7200. # Missed approach requires minimum climb of 203 feet per NM to 5040.			
	For uncompensated Baro-VNAV systems, procedure NA below -9°C or above 54°C.				

D-ATIS	NORCAL APP CON		RENO TOWER	GND CON	CLNC DEL	CPDLC
<b>135.8 363.0</b>	<b>119.2 279.55</b>	<b>126.3 353.9</b>	<b>118.7 257.8</b>	<b>121.9 348.6</b>	<b>124.9 370.85</b>	



13000	ZIDGO	USINE	YARKU	See planview for multiple IF locations.	
tr 167°		tr 184°		WORTH	HOMES
URATE		6400		7700	
RW17L		5445		GP 3.00° TCH 75	
3 NM		3 NM		4.3 NM	
CATEGORY	A	B	C	D	
RNP 0.12 DA*	4754-1		339 (400-1)		
RNP 0.17 DA#	5017-1¾		602 (700-1¾)		
RNP 0.30 DA	5067-1⅞		652 (700-1⅞)		



## AUTHORIZATION REQUIRED

MIRL Rwy 8-26  
 REIL Rwys 8, 17L, 26, and 35R  
 HIRL Rwys 17R-35L and 17L-35R

SW-4, 15 MAY 2025 to 12 JUN 2025

SW-4, 15 MAY 2025 to 12 JUN 2025