

(PVINE5.PVINE) 23166

# PVINE FIVE DEPARTURE (RNAV)

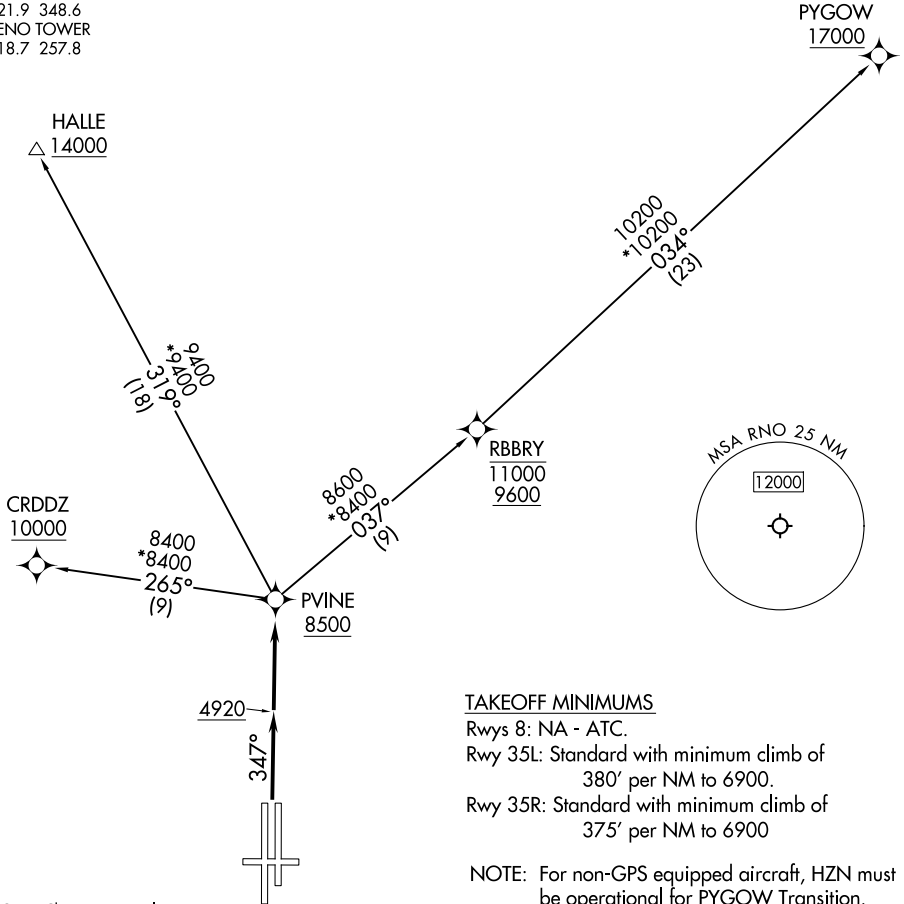
AL-346 (FAA)

RENO/TAHOE INTL (RNO)  
RENO, NEVADA

NORCAL DEP CON  
126.3 353.9  
D-ATIS  
135.8 363.0  
CLNC DEL  
124.9 370.85  
GND CON  
121.9 348.6  
RENO TOWER  
118.7 257.8

RNAV 1 - DME/DME/IRU or GPS.  
RADAR required for non-GPS equipped aircraft.

**TOP ALTITUDE:  
FL190**



### TAKEOFF MINIMUMS

Rwys 8: NA - ATC.  
Rwy 35L: Standard with minimum climb of 380' per NM to 6900.  
Rwy 35R: Standard with minimum climb of 375' per NM to 6900

NOTE: For non-GPS equipped aircraft, HZN must be operational for PYGOW Transition.

NOTE: Chart not to scale.



### DEPARTURE ROUTE DESCRIPTION

TAKEOFF RUNWAYS 35L/R: Climb on heading 347° to 4920, then direct PVINE, thence. . . .  
. . . .Maintain FL190 or assigned altitude. Expect filed altitude 5 minutes after departure.

CRDDZ TRANSITION (PVINE5.CRDDZ)

HALLE TRANSITION (PVINE5.HALLE)

PYGOW TRANSITION (PVINE5.PYGOW)

# PVINE FIVE DEPARTURE (RNAV)

(PVINE5.PVINE) 15JUN23

RENO, NEVADA  
RENO/TAHOE INTL (RNO)

SW-4, 15 MAY 2025 to 12 JUN 2025

SW-4, 15 MAY 2025 to 12 JUN 2025