

(KLUBS.KLUBS1) 24025

KLUBS ONE ARRIVAL (RNAV)

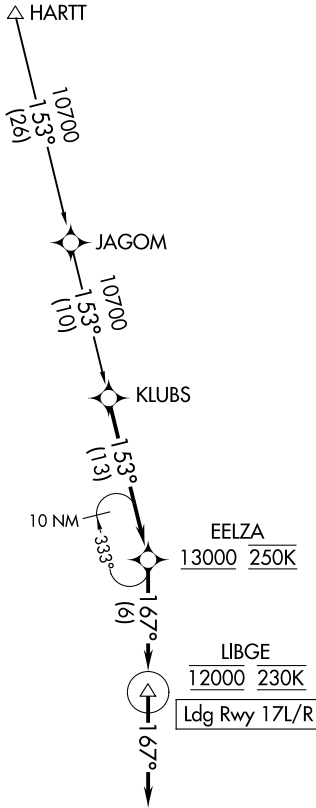
AL-346 (FAA)

RENO/TAHOE INTL (RNO)

RENO, NEVADA

RNAV 1 - GPS.
RADAR required.

NORCAL APP CON
 126.3 353.9
 D-ATIS
 135.8 363.0
 RENO TOWER
 118.7 257.8

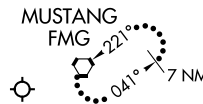


SW-4, 15 MAY 2025 to 12 JUN 2025

SW-4, 15 MAY 2025 to 12 JUN 2025

NOTE: GPS required.

CAUTION: Intense glider activity to FL180.



NOTE: Chart not to scale.

ARRIVAL ROUTE DESCRIPTION

HARTT TRANSITION (HARTT.KLUBS1)

From KLUBS on track 153° to cross EELZA at or above 13000 and at 250K, then on track 167° to cross LIBGE at 12000 and at 230K, then on heading 167°. Expect assigned instrument approach for Rwy 17L/R or RADAR vectors to final approach course.

LOST COMMUNICATIONS

At LIBGE, proceed inbound via Rwy 17R ILS approach. If unable, direct FMG VORTAC and hold.

KLUBS ONE ARRIVAL (RNAV)

(KLUBS.KLUBS1) 25JAN24

RENO, NEVADA
RENO/TAHOE INTL (RNO)