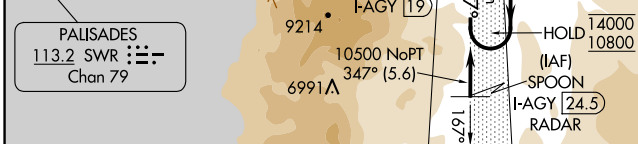
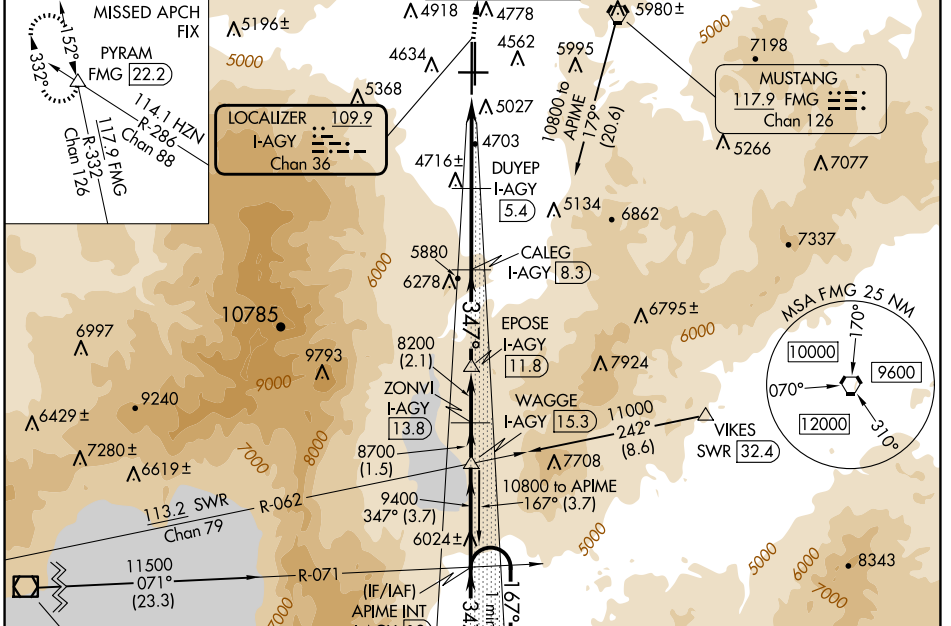


LOC/DME I-AGY <b>109.9</b> Chan <b>36</b>	APP CRS <b>347°</b>	Rwy Idg <b>10011</b> TDZE <b>4410</b> Apt Elev <b>4415</b>
---	------------------------	--

# ILS or LOC RWY 35L

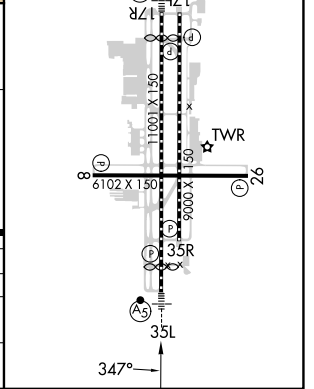
RENO/TAHOE INTL (RNO)

DME required.				MALS/R	MISSED APPROACH: Climb to 11000 on heading 350° and on FMG VORTAC R-332 to PYRAM INT/FMG 22.2 DME and hold, continue climb-in-hold to 11000.
<p>Circling Rwy 8 NA at night. Inop table does not apply.</p> <p>-13°C</p>					
D-ATIS <b>135.8 363.0</b>	NORCAL APP CON <b>119.2 279.55 126.3 353.9</b>	RENO TOWER <b>118.7 257.8</b>	GND CON <b>121.9 348.6</b>	CLNC DEL <b>124.9 370.85</b>	CPDLC



ELEV 4415	TDZE 4410
HIRL Rwy 17R-35L and 17L-35R	
REIL Rwy 8, 17L, 26, and 35R	
MIRL Rwy 8-26	

APIME INT	WAGGE	ZONVI	EPOSE	CALEG	DUYEP	FMG	PYRAM
One Minute Holding Pattern	I-AGY 19	I-AGY 15.3	I-AGY 13.8	I-AGY 11.8	I-AGY 8.3	R-332	△
14000	10800	10500	9400	8700	8200	6860	5800
GS 3.54°	167°	347°	347°	347°	347°	347°	347°
TCH 51							
VGSi and ILS glidepath not coincident (VGSi Angle 3.54/TCH 72).							
	←3.7 NM→	1.5 NM	2.1 NM	3.5 NM	2.9 NM	1.9 NM	1.7 NM
CATEGORY	A	B	C	D			
S-ILS 35L	5062-1½ 652 (700-1½)			NA			
S-LOC 35L	5120-1	710 (800-1)	5120-2	710 (800-2)	NA		
CIRCLING	5340-1¼	925 (1000-1¼)	6460-3	2045 (2100-3)	NA		



SW-4, 15 MAY 2025 to 12 JUN 2025

SW-4, 15 MAY 2025 to 12 JUN 2025