

(KLUBS.EELZA4) 24025

# EELZA FOUR ARRIVAL (RNAV)

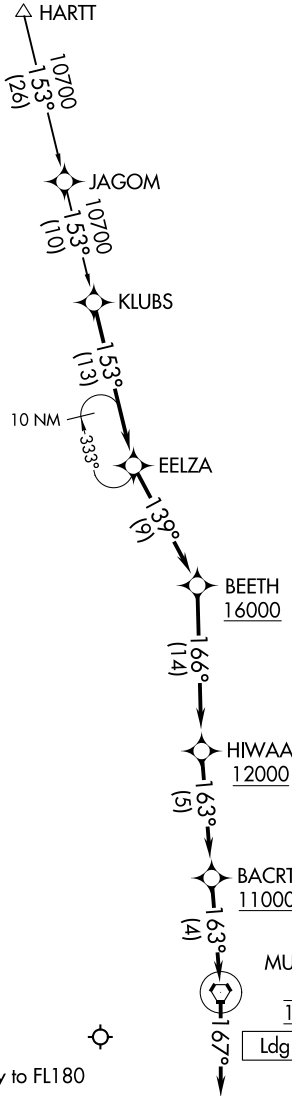
AL-346 (FAA)

RENO/TAHOE INTL (RNO)

RENO, NEVADA

RNAV 1 - GPS.
RADAR required.

NORCAL APP CON  
 126.3 353.9  
 D-ATIS  
 135.8 363.0  
 RENO TOWER  
 118.7 257.8



SW-4, 15 MAY 2025 to 12 JUN 2025

SW-4, 15 MAY 2025 to 12 JUN 2025

NOTE: GPS required.  
 CAUTION: Intense glider activity to FL180

NOTE: Chart not to scale.

## ARRIVAL ROUTE DESCRIPTION

### HARTT TRANSITION (HARTT.EELZA4)

From KLUBS on track 153° to EELZA, then on track 139° to cross BEETH at or above 16000, then on track 166° to cross HIWAA at or above 12000, then on track 163° to cross BACRT at or above 11000, then on track 163° to cross FMG VORTAC at 10000, then on heading 167°. Expect assigned instrument approach for Rwy 35L/R or RADAR vectors to final approach course.

# EELZA FOUR ARRIVAL (RNAV)

(KLUBS.EELZA4) 25JAN24

RENO, NEVADA  
RENO/TAHOE INTL (RNO)