

(ALPYN1.ALPYN) 22307

ALPYN ONE DEPARTURE (RNAV)

AL-346 (FAA)

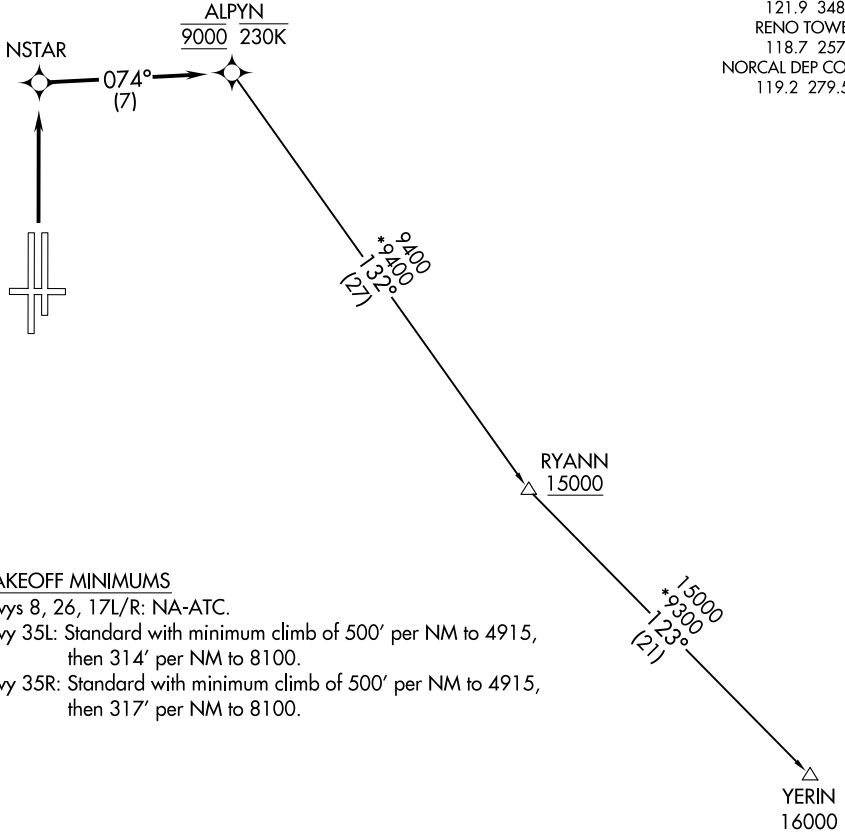
RENO/TAHOE INTL (RNO)
RENO, NEVADA

TOP ALTITUDE:
FL190

RNAV 1 - DME/DME/IRU or GPS.

RADAR required for non-GPS equipped aircraft.

D-ATIS
135.8 363.0
CLNC DEL
124.9 370.85
CPDLC
GND CON
121.9 348.6
RENO TOWER
118.7 257.8
NORCAL DEP CON
119.2 279.55



TAKEOFF MINIMUMS

Rwys 8, 26, 17L/R: NA-ATC.

Rwy 35L: Standard with minimum climb of 500' per NM to 4915, then 314' per NM to 8100.

Rwy 35R: Standard with minimum climb of 500' per NM to 4915, then 317' per NM to 8100.

NOTE: Chart not to scale.



DEPARTURE ROUTE DESCRIPTION

TAKEOFF RUNWAYS 35L/R: Climb direct **NSTAR**, then on track **074°** to cross **ALPYN** at **9000** and at or below **230K**, thence . . .

. . . on **YERIN** transition maintain **FL190** or assigned altitude. Expect filed altitude 5 minutes after departure.

YERIN TRANSITION (ALPYN1.YERIN)

ALPYN ONE DEPARTURE (RNAV)

(ALPYN1.ALPYN) 03NOV22

RENO, NEVADA
RENO/TAHOE INTL (RNO)

SW-4, 15 MAY 2025 to 12 JUN 2025

SW-4, 15 MAY 2025 to 12 JUN 2025