

VORTAC RBL <b>115.7</b> Chan <b>104</b>	APP CRS <b>149°</b>	Rwy Idg TDZE Apt Elev	<b>5431</b> <b>352</b> <b>352</b>
---	------------------------	-----------------------------	---

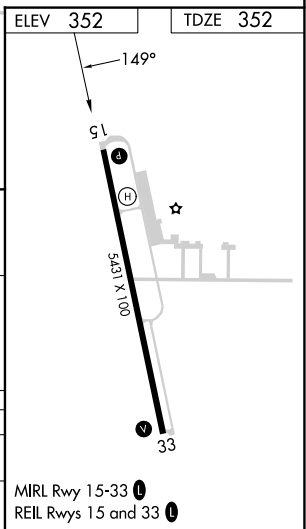
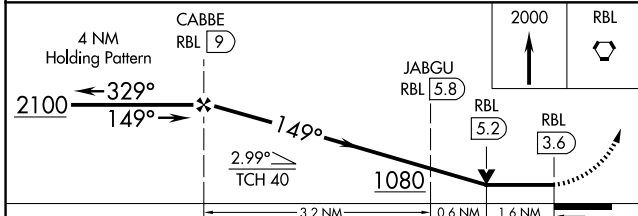
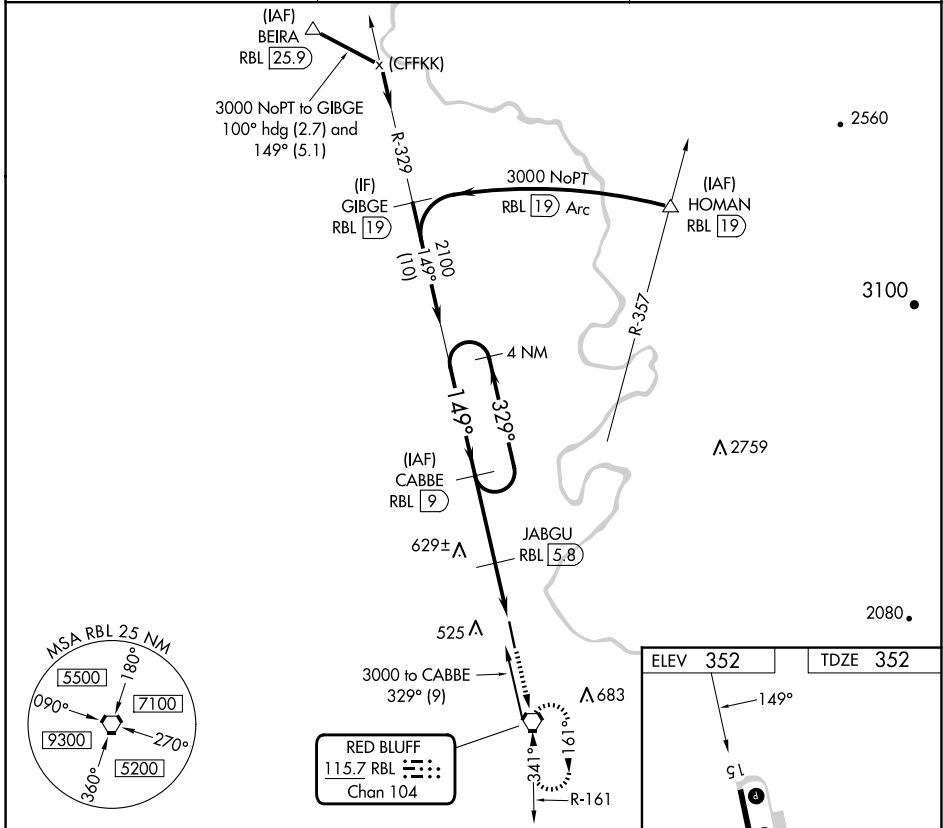
# VOR/DME RWY 15

RED BLUFF MUNI (RBL)

**⚠** When local altimeter setting not received, use Redding altimeter setting and increase all MDAs and all Cat C/D visibility ¼ SM. VDP NA with Redding altimeter setting.

**⚠** MISSED APPROACH: Climb to 2000 direct RBL VORTAC and hold.

ASOS <b>120.775</b>	OAKLAND CENTER <b>132.2 350.3</b>	UNICOM <b>123.0 (CTAF)</b> <b>📻</b>
------------------------	--------------------------------------	--



CATEGORY	A	B	C	D
S-15	880-1 528 (600-1)		880-1½ 528 (600-1½)	
<b>📻</b> CIRCLING	880-1 528 (600-1)		900-1½ 548 (600-1½)	1060-2¼ 708 (800-2¼)

SW-2, 15 MAY 2025 to 12 JUN 2025

SW-2, 15 MAY 2025 to 12 JUN 2025