

WAAS CH 73008 W15A	APP CRS 151°	Rwy Idg TDZE Apt Elev	5431 352 352
--	------------------------	-----------------------------	---

RNAV (GPS) RWY 15

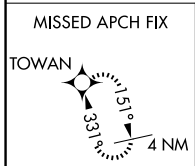
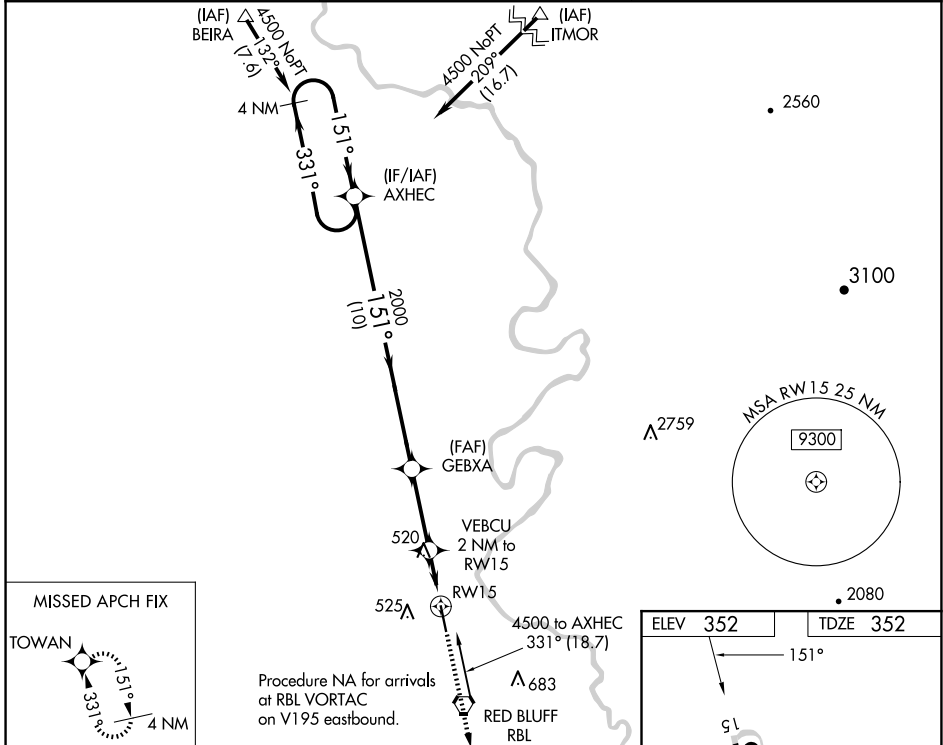
RED BLUFF MUNI (RBL)

RNP APCH.

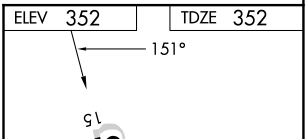
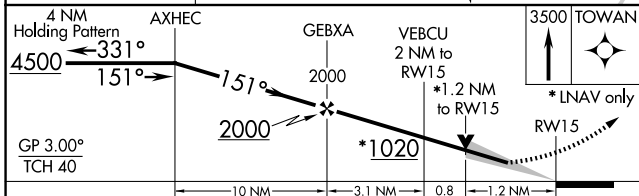
⚠ Circling to Rwy 33 NA at night. Baro-VNAV and VDP NA when using Redding altimeter setting. For uncompensated Baro-VNAV systems, LNAV/VNAV NA below -2°C or above 54°C. When local altimeter setting not received; use Redding altimeter setting and increase LPV DA to 674 feet and increase LNAV/VNAV DA to 860 feet and increase visibility all Cats ½ SM; increase all MDAs 80 feet and LNAV visibility Cats C/D ½ SM and Circling visibility Cats C/D ½ SM.

MISSED APPROACH: Climb to 3500 direct TOWAN and hold.

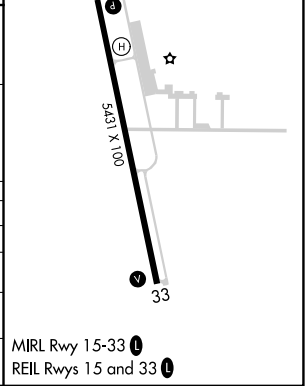
ASOS 120.775	OAKLAND CENTER 132.2 350.3	UNICOM 123.0 (CTAF) 0
------------------------	--------------------------------------	---------------------------------



Procedure NA for arrivals at RBL VORTAC on V195 eastbound.



CATEGORY	A	B	C	D
LPV DA	602-7/8 250 (300-7/8)			
LNAV/VNAV DA	788-1/4 436 (500-1/4)			
LNAV MDA	780-1 428 (500-1)		780-1/4 428 (500-1/4)	
C CIRCLING	860-1 508 (600-1)		900-1/2 548 (600-1/2) 1060-2/4 708 (800-2/4)	



SW-2, 15 MAY 2025 to 12 JUN 2025

SW-2, 15 MAY 2025 to 12 JUN 2025