

# TACAN Y RWY 31

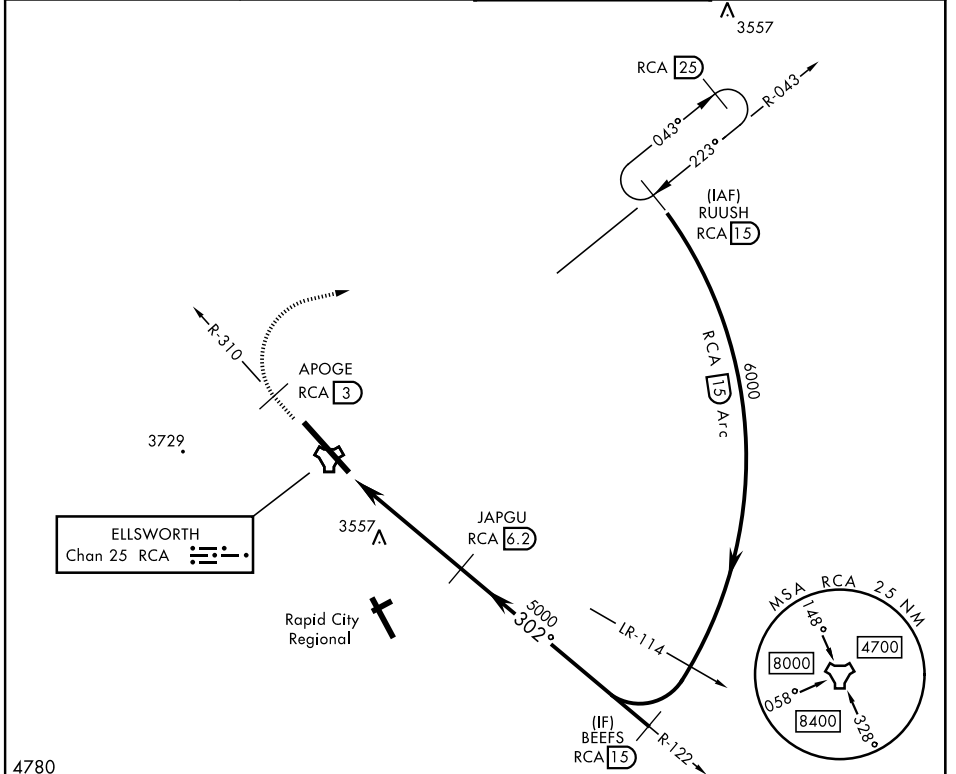
TACAN RCA Chan <b>25</b>	APCH CRS <b>302°</b>	Rwy Idg <b>13,497</b> TDZE <b>3192</b> Arprt Elev <b>3276</b>	[USAF]	ELLSWORTH AFB (KRCA)
-----------------------------	-------------------------	---	--------	----------------------

▼ \* When ALS inop, increase CAT AB RVR to 55 and vis to 1 mile, increase CAT CDE vis to 1 1/4 mile.  
 \*\* CAT E circling restricted to 28th BW aircraft only; 28th BW aircraft will remain within Class D airspace.

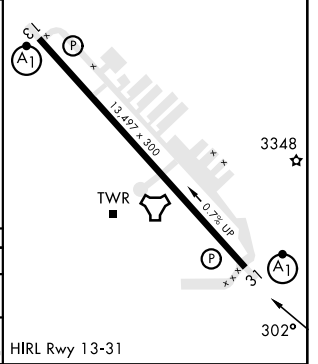
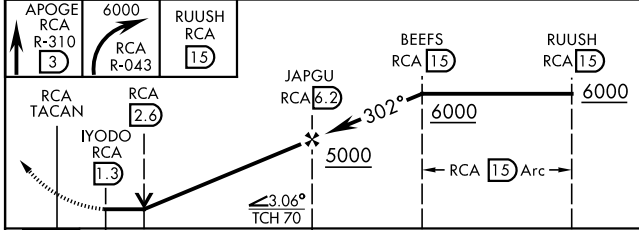
ALSF-1  


MISSED APPROACH: Track outbound RCA R-310 to 3 DME (APOGE), then turn right to join RCA R-043 to 15 DME (RUUSH) and hold. Maintain 6000.

ATIS ★ <b>120.625 269.9</b>	APP CON <b>119.5 259.1</b>	TOWER ★ <b>126.05 253.5</b>	GND CON <b>121.8 275.8</b>
--------------------------------	-------------------------------	--------------------------------	-------------------------------



EMERG SAFE ALT 100 NM 9800	ELEV 3276	TDZE 3192
----------------------------	-----------	-----------



CATEGORY	A	B	C	D	E
S-31*	3820/24 628 (600-1/2)		3820-1 3/8 628 (600-1 3/8)		
<b>C</b> CIRCLING**	3860-1 584 (600-1)	3880-1 604 (700-1)	3880-1 7/8 604 (700-1 7/8)	3980-2 1/4 704 (800-2 1/4)	4040-2 3/4 764 (800-2 3/4)

HIRL Rwy 13-31

# TACAN Y RWY 31

NC-1, 15 MAY 2025 to 12 JUN 2025

NC-1, 15 MAY 2025 to 12 JUN 2025