

TACAN Y RWY 13

TACAN RCA Chan 25	APCH CRS 136°	Rwy Idg 13,497 TDZE 3276 Arprt Elev 3276
-----------------------------	-------------------------	---

[USAF]

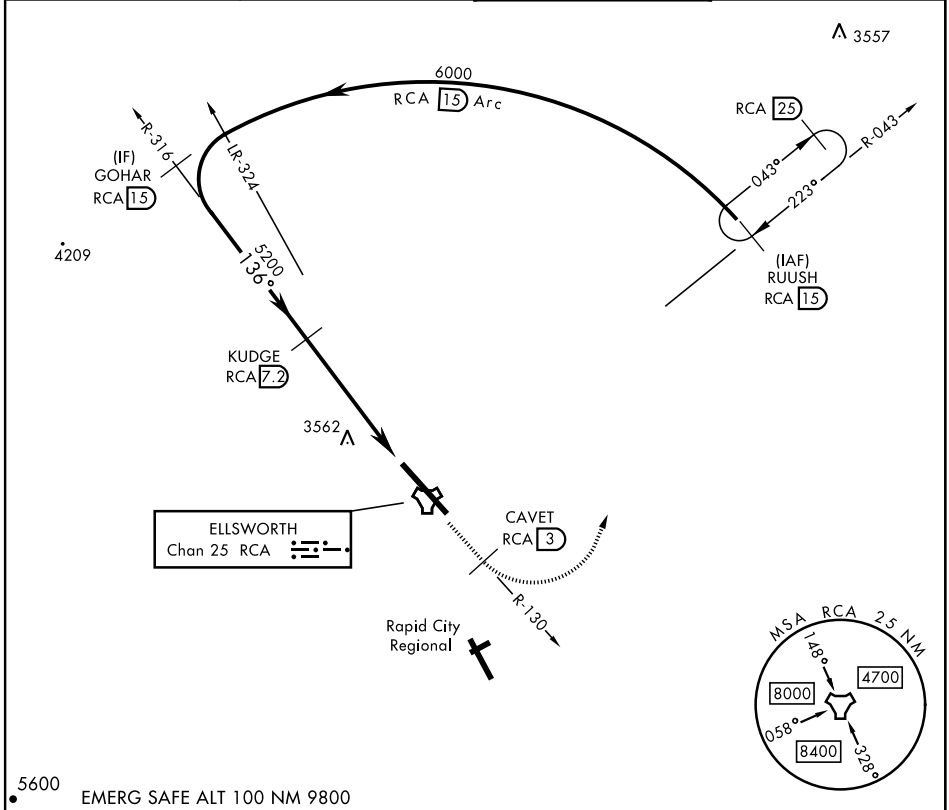
ELLSWORTH AFB (KRCA)

▼ *When ALS inop, increase CAT AB RVR to 55 and vis to 1 mile, CAT CDE vis to 1½ miles.
 **CAT E circling restricted to 28th BW aircraft only; 28th BW aircraft will remain within Class D airspace.



MISSED APPROACH: Track outbound RCA R-130 to 3 DME (CAVET), then turn left to join RCA R-043 to RCA 15 DME (RUUSH) and hold. Maintain 6000.

ATIS ★ 120.625 269.9	APP CON 119.5 259.1	TOWER ★ 126.05 253.5	GND CON 121.8 275.8
--------------------------------	-------------------------------	--------------------------------	-------------------------------



NC-1, 15 MAY 2025 to 12 JUN 2025

NC-1, 15 MAY 2025 to 12 JUN 2025

	RUUSH RCA 15	GOHAR RCA 15	KUDGE RCA 7.2	CAVET RCA R-130 3	6000 RCA R-043	RUUSH RCA 15	ELEV 3276	TDZE 3276
	6000	6000	5200	5.3 NM	0.5	136°		
CATEGORY	A	B	C	D	E			
S-13*	3820/24	544 (600-½)	3820/60	544	(600-1½)			
CIRCLING**	3860-1 584 (600-1)	3880-1 604 (700-1)	3880-1¾ 604 (700-1¾)	3980-2¼ 704 (800-2¼)	4040-2¾ 764 (800-2¾)			

TACAN Y RWY 13